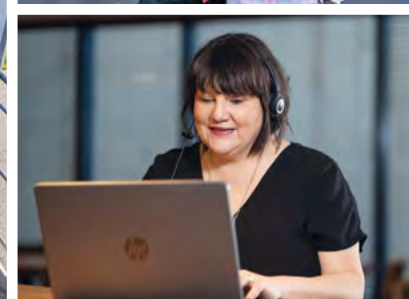
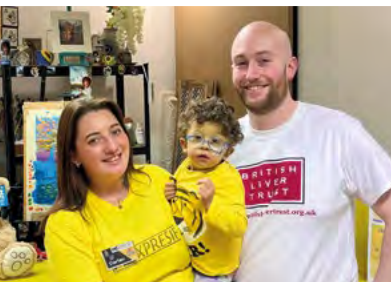




Annual report and accounts

for the year ended 31 March 2025



Contents

Trustees' report	3	Reference and administrative details
Chair's welcome	3	Chairman Alastair King DL
About the British Liver Trust	4	Chief Executive Officer Pamela J Healy OBE
Support for everyone	5	Trustees Alastair King DL (Chair) Wim Bushell Co-Chair of Trustees Sally Benatar QPM Georgina Catt (Appointed 1 April 2024) Ahmed Elsharkawy (Appointed 10 July 2024) Diana Gornall Co-Chair of Trustees Sarah Gosiewska (Appointed 5 May 2025) Abigail Jesson (Resigned 17 December 2024) Toby McMaster Professor Steve Ryder Victoria Sheriff Professor Richard Thompson (Appointed 1 April 2024, resigned 23 June 2025) Professor Douglas Thorburn Graham Warner Lisa Woodcock (Appointed 5 May 2025)
Nurse helpline	7	Principal Office 1st Floor Offices, Venta Court 20 Jewry Street, Winchester SO23 8FE
Raising awareness	8	Company Registration Number 2227706
Improving early diagnosis	12	Charity Registration Number 298858 (E&W), SC042140 (Scotland)
Love Your Liver roadshow	14	Bankers CAF Bank, PO Box 289 West Malling, Kent ME19 4TA NatWest, 2 Tavern Street, Ipswich, Suffolk IP1 3BD Flagstone Investment Management, 1st Floor Clareville House, 26-27 Oxendon Street London SW1Y 4EL
Driving change in healthcare and policy	17	Investment managers Brewin Dolphin, 12 Smithfield Street, London EC1A 9BD
Partnering on research and involving patients	20	Auditor Hopper Williams & Bell Ltd Chartered Accountants & Statutory Auditors Highland House, Eastleigh, Hampshire, SO53 4AR
Supporting children and young people	23	
Thank you for your support	26	
Financial review	28	
Statement of trustees' responsibilities	32	
Independent Auditor's Report to the Members of British Liver Trust	33	
Financial statements	36	
Notes to the financial statements	39	

Chair's welcome



Welcome to the British Liver Trust's annual report and accounts for 2024 to 2025. It has been a privilege to serve as Co-Chairs of this incredible

charity during Alastair's term as Lord Mayor of the City of London. This year's report, covering the year ending March 2025, showcases a year of real progress in our mission to tackle the liver disease crisis.

This has been a landmark year – our first full year as a unified organisation following the official merger of the British Liver Trust and Children's Liver Disease Foundation on 1st April 2024. Together, we're building a stronger, united voice for people of all ages affected by liver disease. Our first all-staff day in Winchester brought new colleagues together to collaborate and drive forward our vision for the future.

Our support offer continues to expand. We've enhanced our information resources, grown our online and face-to-face support groups, and developed digital communities for young people. Our nurse-led helpline has seen a 10% increase in enquiries, and we were delighted to welcome a dedicated liver cancer nurse specialist to the team.

Early detection saves lives and we've focused on improving early diagnosis across all age groups. Our Yellow Alert campaign is raising vital awareness about liver disease in infants, while our policy and advocacy work continues to push for improvements in liver disease care pathways nationwide.

The Love Your Liver Roadshow visited 26 locations this year, offering free liver scans and vital health information. We also expanded our corporate partnerships and unit hire programme, and took the Love Your Liver unit to both Stormont and Holyrood in support of our advocacy and policy work.

Our influence continues to grow. We launched the All-Party Parliamentary Group on Liver Disease and Liver Cancer and contributed to the first-ever parliamentary debate on health inequalities in liver disease. We also published two significant new reports, further strengthening our policy work.

Despite the progress we've made, there is still much to do. Liver disease and liver cancer deaths continue to rise, and public awareness remains low. That's why we're now shaping our new strategy for 2026-2030 – one that will break the silence around liver disease and drive awareness across the general public, healthcare professionals, politicians and the media.

There is already hope for the future. Adult liver disease has been awarded 'transformative status' by NHS specialised commissioning – a vital step towards improving care pathways and saving lives.

We remain committed to tackling the liver disease crisis head on. To all our staff, supporters, volunteers, fundraisers and donors – thank you. Your passion and dedication drive everything we do. Together, we will continue to fight for change, for progress, and for everyone affected by liver disease and liver cancer.

Wim Bushell

Diana Gornall

"I'm proud to be the Chair of this impactful charity. I'm so grateful to Wim and Di for their insightful stewardship and for guiding the Trust whilst I have been Lord Mayor of the City of London."

Alastair King DL



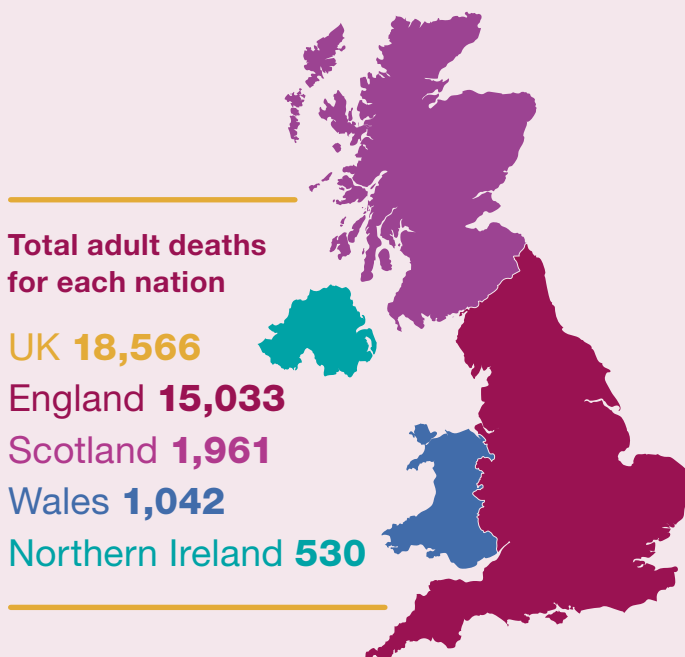
About the British Liver Trust

The British Liver Trust is the UK's leading charity dedicated to supporting adults, children and young people affected by liver disease or liver cancer. Our mission is to transform liver health by raising awareness, promoting prevention, and improving care and support for everyone affected.

Liver disease is one of the top four causes of death in people of working age. It causes more deaths in people of this age than heart disease, colon cancer, breast cancer or strokes, claiming over 18,000 lives a year – that's more than 31 people every single day. Around three-quarters of people with cirrhosis are diagnosed at a late stage, when effective treatment is often no longer possible. But liver disease is usually reversible if it is identified early.

Liver disease can also affect babies, children and young people, and there are currently no cures. A diagnosis often means a lifetime of medical care, and sometimes even the need for a liver transplant.

Despite the scale and severity of liver disease, public awareness remains alarmingly low. Together with stigma, this means that liver disease is far too often overlooked. We are working tirelessly to change this – to make sure that liver disease gets the attention, recognition and action it deserves.



There has been a **4-fold increase** in deaths from liver disease in the last 50 years.

Over the last 10 years, **liver disease deaths have risen by over a quarter.**

Liver disease deaths in adults are around **5 times higher** in the most deprived communities

Over the past decade, deaths from liver cancer have **risen faster than any other type of cancer.**

There are over **100 types of liver disease** that can affect babies, children and young people.

Our 2021 to 2025 strategy

- Support everyone affected by liver disease and liver cancer.
- Improve early detection so more people are diagnosed at a stage when the damage can be reversed.
- Drive up standards of care and improve outcomes for people affected by liver disease and liver cancer.
- Increase awareness and improve people's understanding of liver disease and liver cancer and reduce stigma.
- Campaign for policy changes that make it easy for everyone to be healthier.
- Work in partnership to support research and ensure patients are part of the conversation.
- Support children with liver disease to reach their full potential.

Support for everyone

The British Liver Trust is committed to supporting everyone affected by liver disease and liver cancer – from patients and those at risk, to their family, friends, and carers. Following our merger with Children's Liver Disease Foundation, our support now extends to children, young people, parents and their loved ones.

We offer a wide range of support services, from easy-to-understand information (both online and in print), to adult support groups, and vibrant online communities for adults and young people. Our nurse-led helpline is always available to answer questions or simply offer a listening ear. And for families facing childhood liver disease, we offer dedicated one-to-one support – because no-one should face it alone.

Supporting everyone affected by liver disease

Developing and sharing clear, reliable and easy-to-understand information is a big part of how we support people affected by liver disease. We want everyone to have access to trusted resources developed with input from medical experts, patients and families.

In February 2025, for example, we launched updated information on cirrhosis in adults, with sections covering causes, symptoms, risk factors, diagnosis and treatment options. We're already seeing the impact of this – page views and visits have both increased by 81%, with around 35,000 people visiting these pages in the first 3 months alone.

Liver disease also affects children and young people and many of the conditions are rare. We're proud to be the only organisation in the UK offering detailed information for parents and families on these rare conditions. This year, we launched new resources on Crigler-Najjar syndrome, Hepatitis A, cystic fibrosis-related liver disease and fibropolycystic liver disease.

We're here for everyone affected by liver disease – and that means making sure our information and services are available in as many languages as possible. In April 2024, we made the

In 2024/25 we supported even more adults, children, young people and families

- Our helpline nurses received **5,313 enquiries** – that's a **10% increase** since last year
- Our online community **grew by 11%** to a total membership of **40,176**
- We ran **12 Hive Hang Out sessions** for young people with a total of **89 attendees**
- We launched **2 young people's podcasts** and **2 parents' podcasts**
- **Over 44,000 copies** of our resources were ordered



Liver Cancer UK website available in 104 languages. We rolled out the same service to the British Liver Trust website in October 2024. We've also added an interpreter service to our nurse-led helpline so that people can get the support they need in their preferred language. In December 2024 we launched our leaflet for people just diagnosed with hepatitis B in 18 different languages. So far, the leaflets have been downloaded over 200 times, with Arabic, Pashto, Bengali and Romanian proving the most popular languages.

"I know I can rely on the British Liver Trust for accurate, engaging information that makes a real difference to my patients."

Face to face support groups bring people together

Living with a liver condition can feel overwhelming but connecting with others who truly understand can make a big difference. That's why we launched our new in-person support groups in a number of locations. The groups are possible thanks to the National Lottery Community Fund.

Some of our group meetings focus on a specific diagnosis or symptom. Others offer more general support for anyone affected, including family members and carers. We also invite guest speakers to our meetings to share helpful insights.



Record number of virtual support groups

Our virtual support groups are a vital link for adults affected by liver disease. They offer a safe, confidential space for people to meet, share and find support. They are particularly useful for those who are too ill to travel, or geographically isolated.

One of these groups is our Hepatitis B Virtual Support Group. It provides a space where people living with Hepatitis B can share reliable information on how to live well with the condition, learn through shared experiences, and promote patient advocacy to give those affected by Hepatitis B a voice.

Digital communities supporting young people

It can be incredibly isolating to live with a rare liver disease – especially when you're young. Many children and young people are diagnosed with conditions most people have never heard of. That can make it hard to feel truly understood by friends, classmates or adults who are there to support you.

That's why we created HIVE – a digital community designed by young people for young people with a liver condition or transplant. In HIVE, young people don't need to explain their condition or worry about looking or feeling different because everyone who attends faces similar issues, challenges and worries.

HIVE groups are moderated by our team to ensure a safe and supportive space. Members can connect through group chats, news feeds, and one-to-one conversations with our Young People's Officer.

We also host monthly HIVE Hangouts – fun, relaxed online meetups where young people can take part in activities and connect with others their age. HIVE currently supports 111 members across both age groups and continues to grow in popularity. Young adults aged 18-24 also have the chance to become HIVE ambassadors, using their experience to support and inspire others in the community.

“HIVE has been amazing, because you get to speak to people who understand what it's like to have a liver disease and go through processes such as transplantation as well as day to day life with liver disease... I'm so grateful for the group!”

Nurse helpline

Our nurse-led helpline **now offers an interpreter service for patients**

Enquiries **grew by 10%** over the year to a total of **5,313**

In total our nurse team spent **over 2,800 hours handling enquiries**

On average, **calls last over 17 minutes**, but a **complex enquiry can take up to 90 minutes**

The **top 3 reasons** for contacting our nurses were **cirrhosis, getting a diagnosis**, and **worry about symptoms**

Expanding our helpline with specialist cancer support

Thanks to funding from Macmillan Cancer Support, June 2024 saw the addition of a liver cancer specialist nurse to our helpline team. Every day 17 people are diagnosed with liver cancer and sadly the prognosis is really poor with only 13% surviving for 5 years. Having access to specialist emotional support and advice is critical for these patients, many of whom report difficulty accessing care.

Ann's story



Before I contacted the British Liver Trust's nurse-led helpline in October 2023 I felt so lost – just thinking about it makes me feel emotional. I was getting no answers on my condition,

the wait on the NHS was really long, and I was trying to hold it together, but not managing.

In 2012 I was pregnant and having a scan when the radiographer said, in passing, that I had cysts on my liver and kidneys. In 2022 a radiographer recommended I had my cysts drained as they were so large, but I was told by my local hospital they would never drain cysts and it was left at that.

My symptoms started worsening and in 2023 I started to feel a burning and pulling pain and had a swollen tummy. I was also feeling increasingly tired throughout the day. A CT scan found the cysts were covering my liver and it was also mentioned that I might need a liver transplant in the years to come.

I found the British Liver Trust's nurse-led helpline by Googling – I didn't know anything about the Trust before – and I called them in tears.

The nurse I spoke to was so kind and her help was immeasurable. From December 2023 through to February 2024 I called the helpline every month and they always listened to me.

I finally saw a liver registrar who explained the cysts were covering my whole liver and couldn't be drained because they would just keep growing back. The British Liver Trust nurses gave me their full support during this anxious time. I found that they filled the gap when the NHS were under pressure.

In June 2024 I was admitted to a liver unit as my symptoms were so great and I am now anxiously waiting on the transplant list. The British Liver Trust have helped me to keep a positive mindset. Without them, I wouldn't have been able to cope as well as I have psychologically. If anyone with liver disease is in a place where their symptoms are really bad and they're not being listened to, just call the British Liver Trust and get some advice.

The British Liver Trust have helped me keep a positive mindset. I wouldn't have coped without them.

Raising awareness

Part of our mission is to raise vital awareness of the growing liver disease crisis. Too few people recognise the scale of the problem – or understand how a lack of awareness contributes to late diagnosis and missed opportunities for prevention. Many people are unaware that liver disease doesn't just affect adults – it can impact babies, children and young people too.

Through our media work we shine a spotlight on this urgent issue – amplifying our message, increasing public understanding, and challenging the stigma around liver disease.

Over 400,000 people
have now completed our
'are you at risk' online
screening tool

The British Liver Trust
website
was viewed over
4.4 million times

More than
40,000 members
use our
peer-to-peer
support forum

We have nearly
43,000 followers
engaging with us across our
social media channels

Our media work generated
1,347 stories
which had the opportunity
to be seen over
900 million times

Eastenders storyline raises awareness of childhood liver disease

In November and December 2024, BBC's *EastEnders* brought national attention to childhood liver disease with a powerful storyline about a two-year old boy diagnosed with autoimmune liver disease. We were delighted to see this important issue highlighted on such a popular drama, as many people don't realise that liver disease can affect babies and young children.

Our team worked closely with the *EastEnders* research team while the storyline was being developed, providing expert information and guidance to ensure the condition and its implications were portrayed with accuracy and sensitivity.

By telling this story, *EastEnders* is helping to break down misconceptions about liver disease, showing that it can affect people of all ages – including children.



Panorama programme highlights alcohol-related liver disease

BBC Panorama's *Binge Drinking and Me*, broadcast in November 2024, shone a much-needed spotlight on the impact of alcohol-related liver disease.

We were proud to work closely with journalist Hazel Martin and Rogan Productions over many months to support the development of this powerful programme. Our team provided vital information about liver disease, alcohol misuse, and the urgent action needed to tackle the issue. We also arranged for the team to attend and film at one of our Love Your Liver roadshows to see our work in action.

The programme took a close look at the alarming rise in alcohol-related liver disease among women in the UK. BBC journalist Hazel went on a personal journey to find out why alcohol-related deaths from liver disease among women under 40 have risen so sharply over the last decade. Along the way she spoke to doctors, patients and experts in the drinks industry – and found a key cause is Britain's binge-drinking culture. She also explored what could be done to turn things around. Hazel's story made it clear how important it is to raise awareness, identify liver disease early, and focus on prevention. It also highlighted the value of our Love Your Liver campaign.

The response to the programme was incredible, with a wave of media coverage featuring the charity across both national and regional press. We experienced a huge surge in demand following the broadcast – evident both in the length of queues at our roadshow events and in the distances people were willing to travel to be seen. In some cases, people travelled five to six hours to attend because they were worried and couldn't access services in their local area. Even now, the programme is still referenced by visitors as a reason for attending.

“Shows like Panorama have the power to get our life-saving messages to millions of people in one go. But we were still amazed by the impact of this episode”



The programme resulted in
over 300 pieces
 of additional national and
 regional media coverage

On the day of broadcast, we saw an
865% increase
 in visits to our Facebook page

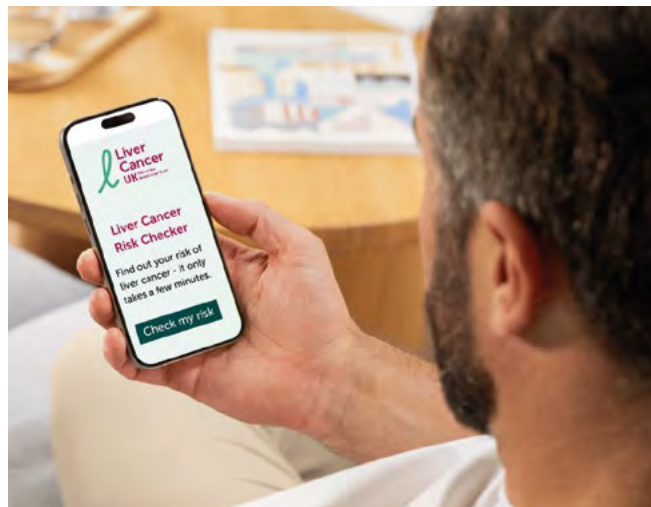
There was a
huge surge in calls
to the helpline
 from people in their 40's and 50's
 seeking support to
reduce their alcohol intake

There were an additional
323,000 visits
 to our website

Liver cancer risk checker

To coincide with Liver Cancer Awareness month in October, we launched our free Liver Cancer Risk Checker, now available on our Liver Cancer UK website. This easy-to-use tool focuses on the key risk factors linked with hepatocellular carcinoma (HCC) and bile duct cancer (cholangiocarcinoma) – the two most common forms of liver cancer.

Liver cancer has one of the lowest survival rates of any cancer in the UK. Every day, 17 people lose their lives to the disease – that's around 6,200 deaths a year. Early detection is vital, but there are often no symptoms in the early stages. Our risk checker provides a simple and convenient way for people to evaluate their risk factors and understand what actions they may need to take.



Since launch, the risk checker has been completed over 3,500 times. Our key message is clear – catching liver cancer early can save lives.

Youngsters steal the limelight on Big Yellow Friday

On 1 March 2025, supporters across the UK came together to support children and young people with liver disease by taking part in Big Yellow Friday. This much-loved annual event has been raising awareness and vital funds for Children's Liver Disease Foundation for many years. But this year was extra special – it was our first Big Yellow Friday as a merged charity.

The day was a huge success, with everything from bake sales and yellow-themed office days to school fundraisers and community events. Our star supporter, Sooty, also joined in the fun with some fantastic yellow-themed ideas and a fabulous promotional video. Thanks to the incredible efforts of everyone involved, we raised over £15,000 for our children's services and boosted awareness of what it means to have a childhood liver disease.

Darian, who organised a week of fundraising activities, said:



“I’m delighted to have received such fantastic support from our local community and to have played a part in helping other children like Wesley – the combined total of £1600 certainly exceeded my expectations!”

Love Your Liver month: raising awareness and inspiring action

Love Your Liver month is our annual awareness campaign promoting good liver health and encouraging people to take simple steps to reduce their risk of liver disease. This year's campaign was again a huge success, reaching millions across the UK through local and national media coverage.

We sent out almost 5000 orders of our campaign materials, reaching communities, healthcare settings and workplaces.

Throughout the month we also shared powerful first-hand stories from people living with liver disease, helping to drive home important messages about prevention and early detection.

During the month, more than 6,700 people completed our free online screener to find out if they are at risk of liver disease. The screener not only helps identify key risk factors but also provides clear, practical information to help people improve their liver health. We also invited everyone to make a healthy pledge; over 150 people took up the challenge by completing fitness challenges, ditching alcohol, reducing sugar and takeaways or eating 5 fruit or vegetables a day.

As part of Love Your Liver month we hosted our Love Your Liver Parliamentary awareness day in Westminster in January 2025. This was the first parliamentary scanning event since the election of 335 new MPs in July 2024. We were delighted to welcome 90 MPs and Peers, including the Minister for Public Health and Prevention. We gave MPs, Peers, and their staff a chance to have a quick, non-invasive liver scan (FibroScan) – the same scans we offer the public on our Love Your Liver roadshows. We performed 104 recorded scans on the day.

Our advocacy calls at the event were for funding in the Comprehensive Spending Review for more fibrosis assessments in the community and increased support for our Make Early Diagnosis of Liver Disease Routine Campaign.



We were supported at the event by clinical experts and four of our amazing patient advocates – Monica, Andy, Sara, and Dorethy. We are incredibly grateful to them for talking so passionately with MPs about their experiences.

Sara, who lost her dad to MASLD, said:

“I’m so grateful for the opportunity to help raise awareness of liver disease and share my dad’s story with MPs. With increased liver awareness and a clear pathway for all liver patients, lives can be saved. I won’t let my dad’s death be in vain and will keep campaigning so that no other family needs to lose their loved one to preventable liver disease. Early diagnosis with the right intervention will save lives.”

Improving early diagnosis

Early detection of liver disease is vital and can save lives. When found in its early stages, it can often be managed or even reversed. Unfortunately, liver disease often develops with no symptoms and many adults are diagnosed when it is too late for effective treatment.

This challenge is even greater in babies, children and young people – where liver disease is often rare, hard to recognise and frequently overlooked.

We are committed to changing this. Our goal is to improve early diagnosis of liver disease across all age groups, giving everyone the best possible chance for effective treatment and a healthier future.

Postcode lottery for liver disease pathways

Following sustained campaigning on behalf of patients for our Make the Early Diagnosis of Liver Disease Routine campaign, we are delighted that there was a 10% increase in the number of health bodies in the UK with a full pathway for the early detection of liver disease.

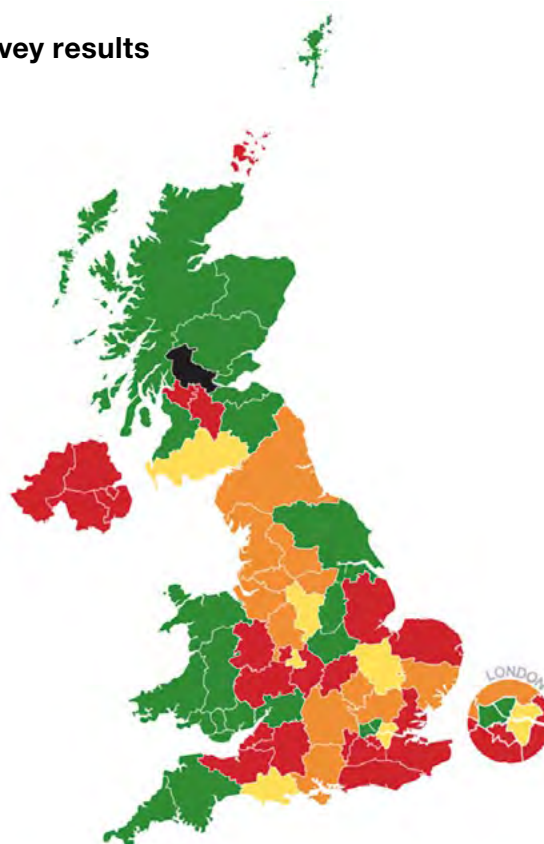
Our research, published in the *British Journal of General Practice* in January 2025, showed that comprehensive care pathways are now available in 36% of areas, an increase from 26% in 2020. Our campaigning and advocacy work supported the delivery of the national All-Wales Abnormal Liver Blood Test Pathway in 2021, a national liver pathway for every patient in Wales. There have also been improvements in the number of Health Boards in Scotland commissioning full pathways for the early detection of liver disease.

In addition to our research, we engaged a planned sequence of communications to raise awareness and influence commissioning bodies. We met with commissioning body executive teams and asked our supporters to write directly to their MPs. Over 1000 patients supported our campaign. We held a number of parliamentary events, provided a toolkit to clinicians, secured 300 pieces of media coverage and held webinars for GPs.

However, there is still much work remaining. The research also showed that 80% of Integrated Care Boards in England lack an effective pathway for identifying and managing liver disease, despite a sharp increase in liver-related deaths.

The findings highlight the urgent need for nationwide improvements in liver disease detection and management and inform our advocacy calls and strategy moving forward. We will campaign for early detection pathways in all ICBs and equivalent health bodies – early detection will not only save lives but also ease pressure on the NHS and reduce healthcare costs.

Survey results



- Full pathway in place
- Partial pathway or pathway in development
- Pathway available but not consistent across the area
- No commissioned pathway
- Did not respond

Lighting up for liver cancer awareness month

In October, a record number of UK landmarks lit up in green as part of our Light Up For Liver campaign. More than 30 landmarks across 21 towns and cities joined together to shine a green light and send a message of solidarity to everyone affected by liver cancer. The lights also played a vital role in raising awareness of a cancer that sees an estimated 6,000 new cases every year in the UK.

Among the illuminated buildings were BT Tower in London, the Library of Birmingham, Marischal College in Aberdeen, Winchester Town Hall, Merseyside Police Headquarters, Gateshead Millennium Bridge and Rochester Cathedral.

Our policy team built on this awareness by securing a debate in the Scottish Parliament. With the support of Clare Haughey MSP, the debate highlighted the growing crisis of liver disease and liver cancer in Scotland. Following the debate, Jackie Bailie MSP and her joint co-convenor Miles Briggs MSP lent their support to our letter to the Cabinet Health Secretary Neil Gray, calling for a national liver cancer pathway.



During the debate, Jenni Minto MSP, Minister for Public Health and Women's Health, delivered the Government's response, stating: "Tackling health inequalities and improving healthy life expectancy continue to be key priorities for this Government". She also emphasised the importance of early detection in combating liver disease.

Yellow Alert campaign: Improving early diagnosis in newborns

Biliary atresia is a rare, life-threatening liver disease that affects newborn babies. It happens in around 1 in 17,000 live births in the UK. Early diagnosis is critical – if it is identified before a baby is eight weeks old, a surgical procedure called a Kasai can help restore bile flow and support liver function. Without early intervention, it is likely a child will need a liver transplant before the age of two.

Despite the urgency, biliary atresia can go undetected due to its rarity and the difficulty identifying early symptoms. The Yellow Alert campaign is working to change this. The campaign focuses on raising awareness of the signs and symptoms of biliary atresia – including prolonged jaundice, pale stools and dark urine – among healthcare professionals and the general public. We are the only provider of detailed, reliable information on prolonged jaundice and biliary atresia in the UK.

To build awareness and support early detection, we distributed over 23,000 Yellow Alert resources to healthcare professionals across the UK last year. We're also building links with midwifery and health visiting course tutors to embed the message in undergraduate curriculums. To further amplify the message, we launched a podcast exploring the early identification of liver disease in infants. The podcast features a mother sharing the personal story of her child's diagnosis with biliary atresia, bringing a powerful, real-life perspective to the Yellow Alert campaign.



Love Your Liver roadshow

Our Love Your Liver roadshow travels across the UK, giving people the chance to check their liver health and take positive steps to improve it. Finding liver disease early offers the best chance for successful treatment. At the roadshow, visitors can complete our quick liver health screener and receive a free liver scan.

We visited
26 locations
across **8 regions** and
covered approximately
2800 miles

3962
people
had free
liver scans at
our roadshows

292
people
were given GP letters
requesting further tests
(7.4% of those scanned)

Love Your Liver roadshow visits Stormont and Holyrood

Our Love Your Liver unit made two high-impact visits to champion liver health and share our advocacy work and policy calls.



In May 2024, we took the unit to the Scottish Parliament at Holyrood, where the event drew fantastic cross-party turnout. More than 20 Members of the Scottish Parliament (MSPs) attended, including Cabinet Secretary for Health Neil Gray and Minister for Public Health Jenni Minto. We scanned 78 people and engaged in many impactful conversations with ministers, MSPs, and advisers. Transplant patients John and Moray spoke with MSPs to share their lived experiences of liver disease.

In September 2024, we made our first-ever visit to Stormont, after devolved government was restored. We had an outstanding turnout with half of the Assembly, 45 MLAs (Members of the Legislative Assembly) joining us, including Mike Nesbitt MLA, Minister of Health. We were also joined by Emma Little-Pengelly, the Deputy First Minister for Northern Ireland. During the visit, we carried out 133 liver scans and urged MLAs to write to the Minister of Health, calling for the expansion of FibroScan technology across all Health and Social Care Trusts. The Stormont event formed part of a wider four-day trip across Northern Ireland where we provided liver health screening and scans to over 500 people in the community.



"I had a scan at your recent roadshow in Durham. I cannot thank the staff enough at the roadshow and it's great that this scheme seems to go from strength to strength every year. The work you do is very important and is helping to make people more proactive about their liver health. Thank You"

Workplaces partner with the British Liver Trust to promote liver health among employees

In 2024/2025, we expanded our corporate partnership and Love Your Liver unit hire programme, bringing liver health awareness directly into workplaces.



In April 2024, the Love Your Liver unit visited Canary Wharf, where we scanned 74 employees. In October, the team spent two days at Hinkley Point Power Station in Bridgwater, scanning 382 employees. And in January 2025, the unit travelled to Drax Power Station in Hull, where a further 136 employees received liver scans.

At each event, employees had the opportunity to learn about the importance of liver health and how to reduce the risk of liver disease. Employees were offered a liver scan to check for liver damage and received educational materials as part of the Trust's Love Your Liver campaign. Members of the outreach team were also on hand to give talks and provide expert advice and support.

“The events gave people a chance to learn about their liver health, raise awareness of the causes of liver disease and what they could do to love their liver back to health. It also made our workers feel valued because we brought it onto site ... the interest from our workers has been very high.”

Occupational Health and Wellbeing Manager

Partnering with the NHS to improve surveillance

Over the past year, we've been working closely with Operational Delivery Networks (ODNs) and local health board teams to deliver community-based liver health checks, raise awareness, and provide follow-up scans for people on NHS waiting lists.

In July 2024, the West Yorkshire Liver Care ODN hired our mobile unit and British Liver Trust staff to deliver five roadshow events across Wakefield, Huddersfield, Halifax, Leeds and Bradford. Over the course of five days, the team successfully completed 564 FibroScans.

And in February 2025, we partnered with the Mid Yorkshire & Leeds teams to bring the mobile unit to Pinderfields General Hospital in Wakefield and St James's University Hospital in Leeds.

The unit played a crucial role in helping these teams address a backlog of outstanding FibroScans.

“Working with the British Liver Trust enabled West Yorkshire Liver Care ODN Community Liver Health Check team to run mass screen events in the 5 major cities and towns in West Yorkshire. Utilising their mobile unit was beneficial as we were able to see larger numbers of the public in local communities and helped us to deliver our goal of raising awareness about liver health.”

Diane Williams, ODN Manager/Project Lead for Community Liver Health Checks in West Yorkshire

Sara's story



I know everyone thinks their dad is amazing, but mine really, really was. He was a gentleman in every sense of the word and was so kind, loving and generous.

In 2014 my dad was told he had an abnormal liver but not to worry about it. He was never

referred to anyone and the only scan I can see in his medical notes was in 2016, then nothing. In April 2023 he was feeling really lethargic. By September Dad was withdrawn, forgetful and was slurring his words. The doctors thought it might be something neurological like Parkinson's Disease, but still weren't looking at his liver.

In January 2024 he went into hospital with a painful hernia and without that I don't think they would ever have found the MASLD. He was diagnosed with cirrhosis and as soon as I heard that word I went onto the British Liver Trust's website. My dad was given a 50 per cent chance of dying within 12 months. We were devastated and in utter shock. The 'Questions to ask your consultant' page on the British Liver Trust website became my Bible. I told the consultant that my dad had had HE episodes since at least November and he asked if I was from a medical background. I told him I wasn't, but had done a lot of reading on the British Liver Trust's website.

I wanted to know what we could do to help and the consultant said at least 10,000 steps a day to get dad fit enough for a transplant assessment. By his next appointment with the consultant, he was walking everywhere. He smashed the transplant assessment and we were so proud of him and excited for the future. But Dad's health started to dip and we noticed the HE symptoms creeping back in. We knew it was a race against time for the transplant.

On the Monday morning of 1 July we called an ambulance because of how dad was presenting and were worried he could go into a coma. Dad was taken into hospital and never came home again. He passed away on 31 July.

We never thought Dad would die and are now going through his medical records to try to understand why a man who had something wrong with his liver wasn't being scanned. If he had been put under surveillance a few years earlier, they would have seen his liver was getting worse and it wouldn't have got to this point.

Everybody with liver disease should have a pathway – otherwise we'll be heading for a liver disease epidemic, and the NHS will be inundated. I don't understand how there can be leaflets and posters on every condition known to man apart from the liver in GP surgeries when the British Liver Trust has literature that they could print and put up.

The British Liver Trust has an amazing wealth of resources and everyone there is so helpful. We asked for donations to the Trust at Dad's funeral and I've signed up as a volunteer too. People also don't realise how lucky they are to have the Trust's Love Your Liver roadshow because we can't just get scans willy-nilly. They could be walking around as a potential ticking time bomb and a visit to the unit could save their life.

My sister and I went to the roadshow when it was in our town and through a twist of fate, our dad's liver nurse was doing the scanning. It turns out we both have early-stage fatty liver disease and the nurse wants to see us again in six months. Without Dad it would never have occurred to us to go and we feel even through death he's still protecting us.



Driving change in healthcare and policy

It's been an exceptionally busy and successful year for our Policy and Public Affairs Team, with a wide range of events, debates and outreach efforts aimed at advancing the liver disease and liver cancer agenda. Our team has actively engaged with Parliamentarians and policymakers across Westminster and the devolved national parliaments to ensure our key messages remain firmly on the political radar. Throughout this year, our incredible supporters have been with us every step of the way – sharing their lived experiences and acting as powerful advocates for those affected by liver disease and liver cancer.

We held the **first ever debate on health inequalities** in liver disease and liver cancer

Since launching our **#TimeToAct on liver health campaign**, 202 supporters have written to **174 MPs**

A record **90 MPs and Peers** attended our **Love Your Liver awareness day in Parliament**

Since the **General Election** we have **met and briefed over 100 MPs**

First ever parliamentary debate on health inequalities in liver disease and liver cancer

In April 2024, MPs from across the UK took part in the first-ever parliamentary debate on *health inequalities in liver disease and liver cancer*. Held in Westminster Hall, the debate was secured by our policy team, who played a pivotal role in mobilising support from MPs and providing briefings to all MPs who took part.

The debate was sponsored by Navendu Mishra MP and Alison Thewliss MP. It focused on the links between liver health, geographic health inequalities and social deprivation. MPs spoke powerfully and highlighted the stark reality that people living in the most deprived areas are up to five times more likely to die from liver disease compared to those in the most affluent parts of the country.

Vanessa Hebditch, Policy and Communications Director at the British Liver Trust, said: “This important debate highlighted that liver disease is a barometer for health inequalities. Avoidable deaths and hospital admissions for liver disease are highest in our most disadvantaged

communities, with the North of England disproportionately impacted. Bolder action on prevention and earlier detection of liver disease is imperative.”

The debate marked a significant step forward in raising awareness of liver disease among policy makers. Cross-party MPs backed calls from the British Liver Trust for urgent action on prevention and earlier diagnosis.



Launching a new All-Party Parliamentary Group on Liver Disease and Liver Cancer

Following the General Election in July 2024 we relaunched the All-Party Parliamentary Group (APPG) on Liver Disease and Liver Cancer. This milestone followed months of advocacy work after the General Election from our policy team and incredible efforts from supporters, who reached out to their MPs to encourage their support and engagement.

We were delighted to welcome Dr Beccy Cooper MP, the new member for Worthing West and a public health doctor, to Co-Chair the group with Lorraine Beavers MP, Blackpool North and Fleetwood, who represents a constituency with a particularly high prevalence of liver disease.

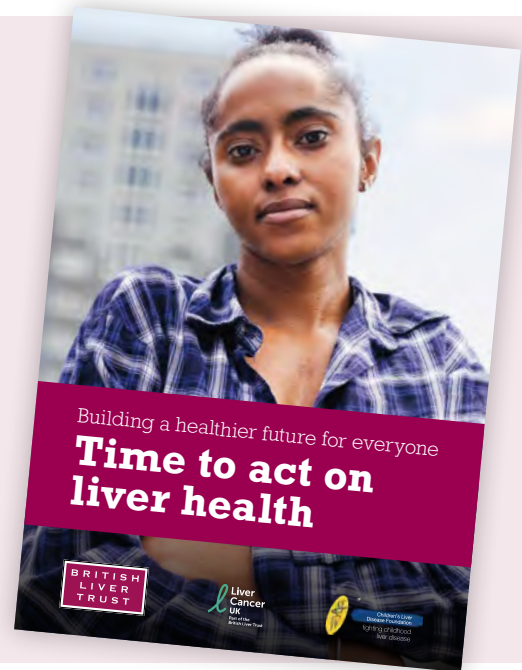
Peter Bedford MP and Robin Swann MP, a former health minister in Northern Ireland, are also Officers for the APPG. The APPG will represent the voice of patients in Westminster and campaign to improve care and outcomes, and address stigma, inequalities and inequity.



Beccy Cooper, Lorraine Beavers, Peter Bedford and Robin Swann

Time to act on liver health report launch

Following the election we launched our policy report '*Time to act on Liver Health*'. This new report was co-produced with patients and clinicians and outlines our key policy calls to transform liver health across the UK. The report seeks to challenge stigma, prejudice and misconceptions around liver disease and liver cancer – everyone can be affected by liver disease. We mailed the report to 650 newly elected MPs and 134 MPs were contacted by our supporters requesting they meet with us. This resulted in a series of one-to-one outreach meetings building a body of new political support.



Driving improvement in the management of alcohol related liver disease

The British Liver Trust contributed to the development of new quality standards for the management of alcohol-related liver disease. Following this, we supported the British Association for the Study of the Liver (BASL) with a national audit to assess current service provision and identify areas for improvement.

As part of this process, we gathered valuable insights from patients and ensured their voices were included in the evaluation. The audit, which is scheduled for publication in a peer-reviewed journal next year, will provide a national benchmark to help drive service improvements and promote the sharing of best practice across the UK.

Enhancing liver disease care and pathways

Following sustained campaigning by the British Liver Trust on behalf of patients we are delighted that liver disease has been recognised as a condition where care pathways could be improved. The Trust worked with the Clinical Reference Group responsible for commissioning liver disease services to make the case for change and we are delighted that adult liver disease has now been awarded 'transformative

status' by the specialised commissioning team. The project included gathering data and evidence and an initial equality health impact assessment. We provided valuable insight from patients gathered from our helpline and patient surveys to support this work. We will be working with NHS England to support their transformative programme commencing in Autumn 2025 to drive change across the care pathway for liver disease.

Hepatitis B report launch: Break the silence

In December 2024 we were joined by politicians, clinicians, and policymakers at the House of Commons for the launch of our powerful new report, *Hepatitis B – Break the Silence*. At the event we urged politicians to commit to action, so that the UK can meet the World Health Organization's pledge to eliminate hepatitis B by its 2030 deadline.

Hepatitis B is a silent threat that can lead to serious complications such as liver cirrhosis and liver cancer if left undetected. While there is no cure, effective lifelong treatments are available that can significantly reduce the risk of severe illness and save lives. Our report shines a spotlight on hepatitis B, capturing the voices of those living with the virus and highlighting the emotional, social, and health challenges

they face. It calls for stronger advocacy, better access to treatment, and improved healthcare infrastructure across the UK.

We were joined at the event by patient advocate Roza, who discovered she had hepatitis B as a young child. She is passionate about removing stigma and improving awareness about the importance of diagnosis and life-saving treatment.

"I lost a close friend to hepatitis B that progressed to liver cancer. His life could have been saved if he was diagnosed sooner. I'm sharing my own story of living with hepatitis B today to help break the stigma and raise public awareness on this silent killer."

Roza's heartfelt words resonated with attendees and strengthened the resolve to push for change.



Partnering on research and involving patients

Research and clinical trials are transforming the lives of people with liver disease and liver cancer – and we're proud to be part of that progress. We're committed to driving change by actively partnering on research and making sure that patients, families and young people are involved from the very start.

Interest in liver disease research remains strong, with patients and families eager to participate and stay informed. By involving them early in the process we can make research more meaningful and relevant – and help make sure that research answers the questions that matter most to people.

We are currently involved in **21 research projects**

Lending our expertise to clinical trials

We recognise how important research is to our patients and their families. That's why we're proud to have partnered with Resolution Therapeutics on a 15-month project involving two pioneering clinical trials.

Our initial work centred around the OPAL study (Observational study in PArticipants with Liver cirrhosis) study, which has been investigating how end-stage liver disease progresses. The aim is to help clinicians and researchers better understand how to improve care for people living with advanced cirrhosis. We played a key role in supporting participant recruitment across nine hospitals in the UK. Working alongside patient representatives, we co-designed, reviewed, and provided feedback on a wide range of patient-facing materials - including website content, blogs, articles, press releases and consent forms – to ensure they were accessible and informative.

More recently, we've shifted our focus to the EMERALD trial (Evaluating Macrophages Engineered to Resolve Advanced Liver Disease). This study is testing an innovative new therapy called RTX001, which uses a person's own white blood cells and converts them into a different type of cell called macrophages. Research suggests these cells may help reduce liver inflammation and support healing. The trial aims to determine whether RTX001 is safe, tolerable, and effective for people with decompensated cirrhosis.

To deepen our understanding and strengthen our involvement, we visited Resolution Therapeutics' laboratories in Hammersmith. There, we met with senior researchers to explore how we can continue to support this important work through meaningful and collaborative patient involvement.



Shaping the future of liver cirrhosis research

As part of our ongoing collaboration with the UK-Chronic Liver Failure Network (UK-CLIF), we're proud to be supporting a James Lind Alliance Priority Setting Partnership (PSP) focused on liver cirrhosis. This important initiative brings together patients, carers and healthcare professionals to identify the key unanswered questions surrounding the care and treatment of liver cirrhosis.

Liver disease is on the rise in the UK, and despite significant research efforts, no new treatment for liver cirrhosis has been developed in the last 20 years. Current approaches remain largely focused on managing symptoms. The PSP helps to prioritise the questions that matter most to those living with or affected by liver cirrhosis –

ensuring that future research is aligned with real-world needs.

As part of the project, we contribute by attending steering group meetings, recruiting patient and carer representatives, and co-designing and promoting patient surveys. We also co-authored the article, 'From O'Shaughnessy to opportunity: innovating Hepatology Trials in the UK' published in *Frontline Gastroenterology*, which reflects our ongoing commitment to patient-centred research.

Working with the PSP is a valuable opportunity to help shape the future direction of liver cirrhosis research – ensuring that the voices of patients, carers and families are heard and embedded at every stage of the process.

Working with the liver community

Creating new parent and young people advisory groups

Following the official merger of the British Liver Trust and Children's Liver Disease Foundation on 1 April 2024, we've been committed to ensuring that the voices of our community remain at the heart of everything we do. As part of this commitment, we created two new advisory groups – one for parents and carers of children with liver disease, and one for young people living with liver conditions.

Our new advisory groups are up and running, with 12 members in the parent/carer advisory group and 6 members in the young person's group. Both groups met 3 times in 2024/25 to discuss important topics such as patient information, communications and website content.

A parent from the group told us:

“Being part of the Parent Carer Advisory Group has been a really positive experience. It's felt great to help shape the future voice as CLDF and the British Liver Trust come together. I'm proud to give something back to a charity that's supported so many families, including mine. It's inspiring to be in a group where parents' and carers' views aren't just heard—they're genuinely valued.”



Working with the liver community

Sharing research progress with patients

Our annual patient survey highlighted the strong interest patients and families have in both current and future research. Building on this, in 2024, we launched a pilot 'Spotlight on Research' virtual session, where two research projects were presented directly to our patient and carer community.

Alongside updates from the research teams, each project featured a patient representative who shared their personal experience of being involved in the study. This gave attendees the chance not only to hear about the progress of the research, but also to understand the value of patient involvement from those with lived experience.

The interactive format allowed patients and carers to put their questions directly to members of the research teams. Based on the success of this first session, we hope to offer more in the future – helping to inspire and encourage others to get involved by hearing directly from those already shaping research.

Working with our European counterparts to strengthen patient voice

Over the last year, our Children and Families Service has been building an exciting international partnership with patient advocacy organisations across Europe.

In May 2024, our Head of Service, Michelle Wilkins, attended a Patient Advocacy Workshop in Milan, hosted by Mirum Pharmaceuticals, alongside colleagues from France, Spain, Germany and Italy. The workshop focussed on exploring ways to strengthen patient voice across Europe and how this can lead to improved care and support for paediatric liver patients and their families.

“When many children’s liver conditions are so rare, there’s extra value in teaming up across borders. The more of us there are, the louder we can shout for what our children and families need.”



Supporting children and young people

Childhood liver diseases are rare, complex and life changing. For many families, a diagnosis marks the beginning of a lifetime of medical care and support. That's why our Children and Families Service is so important. We offer all families tailored support and comprehensive information resources. We also act as a collective voice for everyone affected by childhood liver disease.

We're delighted to say that our Children and Families Service has been going from strength to strength. Since the merger, we've remained committed to expanding and enhancing our services and building a shared vision for the future.

Our Young People's Officer had

49
one-to-one zoom calls
with young people

We had nearly
1,000
direct messages on
social media
from young people

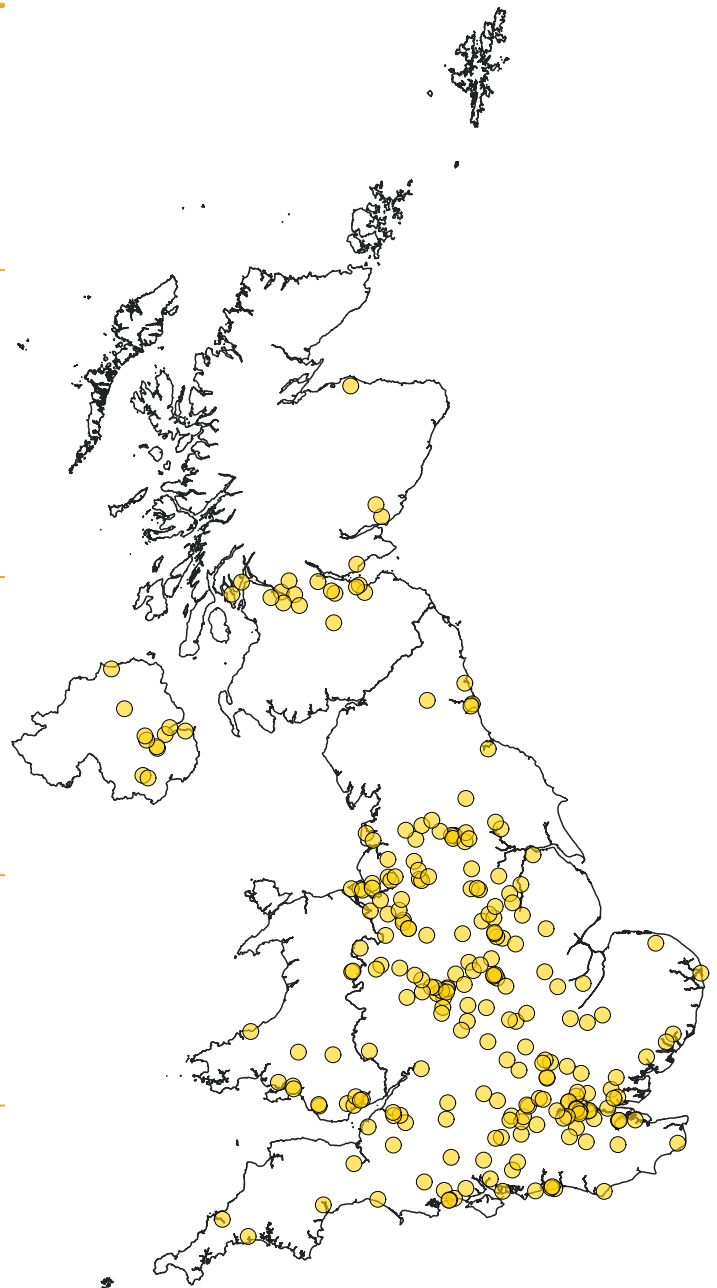
We had
16
meetings with schools
to help support children
with a liver condition

We had
1,378
emails with families

The top 3 reasons

for contacting our families' team were:

mental health and emotional wellbeing
living with liver disease
education and employment support



UK map showing the location of families and young people we have worked with over the year.

Charlina's story



"I was excited to start a nursing course at university as this is something I have always wanted to do, but very early on I found that I was subject to discrimination due to my health history and liver transplant.

I was told that I couldn't go on placement as I could be a risk to others. This led to several months being in limbo on a course in which I couldn't fully participate and ultimately led to me leaving. During this whole time, Louise (Young People's Digital and Engagement Officer) and Michelle (Head of Children and Families Service)

were there to support me. They advocated for me with the university, they were a voice for me when I felt I wasn't being heard and now I have left the course, Louise is helping me explore other career opportunities within the healthcare sector. At each stage they have allowed me to talk about how I felt without me having to feel judged. I am so thankful for their help during a difficult time in my life and for their ongoing support. If it wasn't for them, I wouldn't be where I am now feeling even more confident and determined to get back into the healthcare sector through another avenue that doesn't involve university."

Education and sibling packs

Childhood liver disease is a lifelong condition with significant emotional, practical and educational challenges – for the child diagnosed but also for parents, siblings and family members. That's why we've reviewed and updated our Education and Sibling Packs.

We also recognise the unique challenges faced by siblings of children with liver disease. Our Sibling Pack offers guidance for parents on the emotional impact on brothers and sisters, along with practical advice for supporting them. It also includes engaging, age-appropriate content aimed directly at siblings, and helpful tips and strategies to help them feel understood, included, and supported.



Our Education Pack is designed to help schools, nurseries and colleges understand the needs of pupils and students living with liver disease. It's a comprehensive resource for parents and teachers, with tailored versions for England, Scotland, Wales and Northern Ireland. Our Children

and Families Officer also works directly with school staff to ensure they understand the content of the pack and feel confident about supporting a child effectively.

"The thought of him being cared for by anyone else terrifies me but we cannot afford for me to not work long term so that is a worry too. And we obviously want him to go to school and have a normal life, so your education pack is amazing as most people know nothing about caring for a transplanted immunosuppressed child."

Working with hospitals to enhance support for young people

Our Young People's Officer, Louise, works in partnership with the three specialist liver units at King's College Hospital, Leeds St James's and Birmingham Queen Elizabeth. Together, they're developing a more rounded support system for young people – particularly during the vital transition from paediatric to adult services.

"Most of our young people have been attending the paediatric liver units with their parents for years," says Louise. "As they start to manage their liver condition for themselves, they will invariably have questions and need a bit of additional support. I've set up a working group with youth workers from the centres as we're all

working towards the common goal of young people living well with their liver condition. By sharing ideas and resources, we can ensure that our young people can access the information and support they need as quickly as possible."

Louise's fellow youth workers are equally enthusiastic about the plan. Tobi, a Youth worker at Leeds St James's says: "It's reassuring to know that we are all collaborating to support the young people in our care and great to have the opportunity to discuss ideas and strategies with those who understand the challenges our young people face."

Jemima and Halima's story



Halima was diagnosed with biliary atresia when she was eight weeks old and had Kasai surgery at nine weeks. Unfortunately, this failed, and she was put on the transplant list. Halima received a successful liver transplant at 18

months of age. Her mum Jemima first contacted us on the recommendation of the hospital. She explains why she's glad she did.

"I've always found Kate [Children and Families officer] to be very supportive right from my first communication. She provided me with information to help me understand Hali's liver disease as well as discussing my own condition (I have ulcerative colitis). We also spoke about the challenges which come with having a poorly child.

Since then, Kate has supported me in various ways, from providing information for Hali's school, helping me apply for benefits, providing me with

supporting letters for various reasons, or just listening to me. Sometimes it's a phone or video call but even if I just email her with a question, I know she'll come back to me.

All of this has had a huge impact on how I cope with Hali's condition. I have a better understanding of how to care for her, support my other children and also give myself some grace as well."



Thank you for your support

This is our annual opportunity to thank every single funder and donor for their support. Without you, we simply could not deliver our work. Thanks to you, we are here to support and empower patients and families, to provide guidance and expertise, to help all liver disease patients navigate their journey. And, crucially, to campaign for long term improvements to prevention, early detection and treatment of all liver conditions.

Of course, this year we have merged, bringing adults' and children's services together, both charities learning so much about each other, and all of us being enthused by the passion of both sets of supporters.

We continue to fundraise across a range of income sources. From our £1-a-week lottery to our largest grant from the National Lottery Community Fund for England, we aim to create a sustainable income to secure our future – to be here for everyone who needs us, and continue to drive change.

We delivered our first combined Big Yellow Friday in March, raising over £15,000 for our vital services, and we look forward to an even bigger and better Big Yellow Friday next year.

We launched a corporate wellbeing initiative, highlighting to companies how our Love Your Liver messaging can support staff wellbeing,

and we delivered Love Your Liver corporate events across the country.

Our individual supporters continue to go the extra mile for the charity, and our London Marathon team in 2025 was our biggest ever, raising a magnificent £38,467. We had London royalty running for us this year, with the Pearly Queen and Princess of Fulham, Gemma and Daisy! Daisy was diagnosed with autoimmune liver disease at the age of 11 and it was wonderful for them to be able to take part together.

In an incredibly pressurised environment for funders, we are extremely grateful to all those who are able to support us, at any level, creating a positive impact for liver disease and liver cancer patients, and those at risk, across the country.

Thank you for all your support.



Thank you to our funders

Due to limitations on space, we have included here by name those funders who have given grants of over £2,500. We are grateful for each and every grant. Thank you.

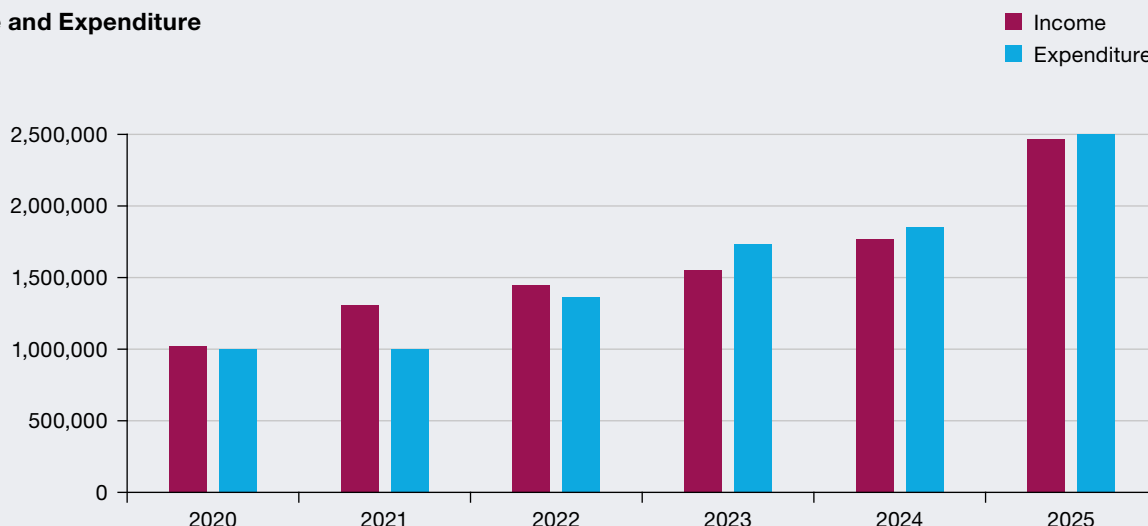
Advanz Pharma	Norgine
AstraZeneca UK	Novo Nordisk
BBC Children in Need	PF Charitable Trust
Boston Scientific	Pilkington Charities' Fund
Candis	Robert Luff Foundation Limited
Chapman Charitable Trust	Roche Diagnostics
Cheisi	Roche Pharma
Community Health Improvement Fund	Roger Raymond Charitable Trust
Cumberland Council (Carlisle West Community Panel)	Sandra Charitable Trust
Echosens	Sir Jules Thorn Charitable Trust
European Liver Patients Association	Takeda
Eveson Charitable Trust	The Adint Charitable Trust
G M Morrison Charitable Trust	The Barcapel Foundation
Gilead Sciences	The Florence Foundation
Incyte	The Foundation for Liver Research
Ipsen	The Henry Lumley Charitable Trust
James Cowper Kreston Foundation	The Hugh Fraser Foundation
James Tudor Foundation	The Medicash Foundation
Macmillan Cancer Support	The Netherton Charitable Trust
Mirum Pharma	The Roger and Douglas Turner Trust
Mrs J B Wood's Charitable Trust	The Shears Foundation
National Lottery Community Fund England	The Simon Gibson Charitable Trust
National Lottery Community Fund Northern Ireland	The Souter Charitable Trust
National Lottery Community Fund Scotland	The Toyota Manufacturing UK Charitable Trust
	The William and Mabel Morris Trust

Financial review

The British Liver Trust recorded a small deficit of £8,710 for the year ended 31 March 2025 (2024: deficit £80,773). This result leaves the Trust in a stronger financial position than anticipated, enabling more robust reserves to be carried forward into 2025/26.

The chart below shows the Trust's significant growth over the past six years, with income increasing from just over £1 million in 2020 to nearly £2.5 million in 2025. This expansion reflects a successful investment-led growth strategy, using reserves to scale up services, staffing, and fundraising capacity. Growth was further boosted this year by the merger with the Children's Liver Disease Foundation on 1 April 2024, which contributed to a step change in scale, expanded our reach across the full age spectrum, and opened up new opportunities for service delivery, partnerships and income generation.

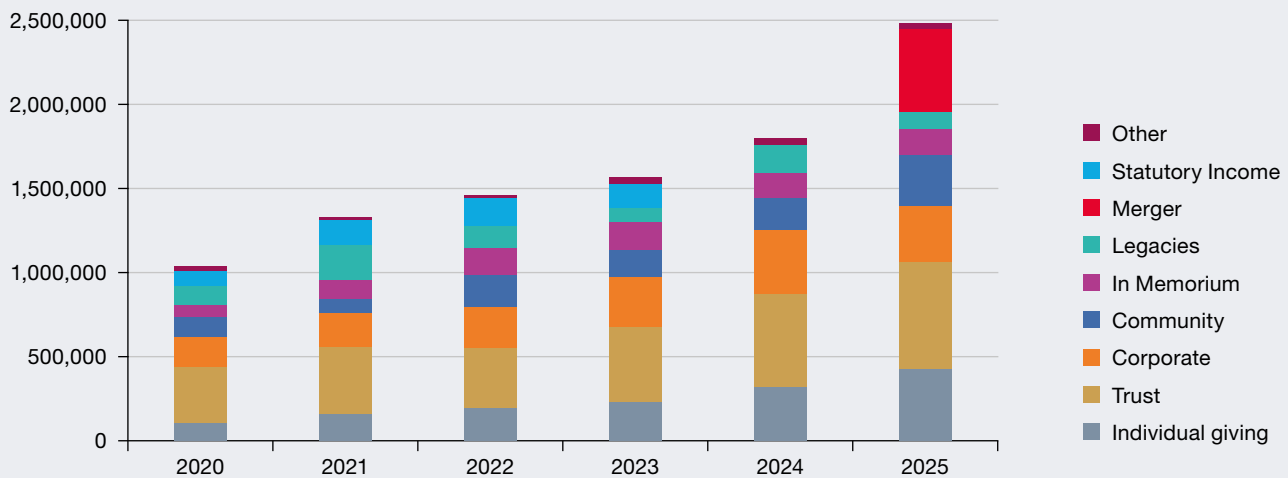
Income and Expenditure



Income

Most income streams have grown substantially over this period, with particularly strong gains in individual giving, trusts and foundations, and corporate partnerships. Community fundraising and in memoriam giving have also shown consistent year-on-year growth, reflecting deepening public engagement with the cause. Legacy income continues to provide important support, albeit with sizeable fluctuations. In contrast, statutory income has declined steadily over the period and ceased entirely in 2024, reinforcing the importance of diversified and unrestricted income sources.

Income



Looking ahead, our 2025/26 budget represents a period of consolidation. While we intend to sustain income growth, particularly by building on opportunities presented by the merger and expanding our support across all life stages, we will exercise restraint on expenditure in order to maintain our reserves. The Trust is committed to maintaining reserves at or near its target level to ensure long-term financial resilience.

Expenditure

In the year to 31 March 2025, total expenditure increased to £2.49m (2024: £1.87m), reflecting the Trust's continued investment in service delivery and organisational capacity following several years of planned growth.

Approximately 76% (£1.90m) of total expenditure was spent on charitable activities (2024: 74%, £1.39m), with 24% (£592k) used to raise funds (2024: 26%, £485k). The proportion of spend allocated to charitable activities increased slightly from the previous year, this shift aligns with our planned growth strategy. Investing in fundraising is essential to securing future income and sustaining service delivery. The Trust remains committed to maximising its impact while maintaining a financially resilient and sustainable foundation.

Staff costs made up the largest share of charitable expenditure at £1.59m (2024: £1.15m), reflecting the Trust's expanded remit and service reach. Support costs also increased proportionately, at £535k (2024: £456k).

Charitable expenditure rose across all programme areas, driven primarily by increased staffing. Following the merger with the Children's Liver Disease Foundation significant investments were made in the following areas:

- Dedicated services for children, young people and families – £425k
- Awareness and communications – £490k
- Helpline and patient information services – a combined £440k
- Peer support and outreach – £314k
- We also maintained a strong focus on Policy and influencing – £231k, to help address systemic challenges facing people with liver disease.

Fundraising

The charity employs a small team of fundraisers to secure charitable grants and donations across the income streams shown in the graph above. The fundraising strategy is developed by the Director of Fundraising and agreed by the Chief Executive and Trustees. Professional fundraisers are used on a time-limited project basis, under the management and monitoring oversight of our Director of Fundraising.

We are registered with the Fundraising Regulator and are members of the Chartered Institute of Fundraising and comply with all voluntary regulation of these bodies. We have received no fundraising complaints during the year or previous year. We comply fully with data protection legislation and our Director of Fundraising and Data & Digital Manager plan and monitor all activity to ensure that there is no activity which puts vulnerable people and other members of the public at risk of intrusion of privacy. Our activity is measured and does not place undue pressure on supporters to give money or other assets.

Reserves

At 31 March 2025 the charity held £903,315 in reserves, (2024 £912,025) of which £422,719 (2024 £238,402) represents funds restricted in their use by the donor. In accordance with the reserves policy, the Board of Trustees have designated £nil (2024 £127,014) of the unrestricted reserves for future use.

Legacy Equalisation Fund – The charity recognises that budgeting for legacy income is a risk, due to the unpredictability of this income stream and in prior years the Trustees established a legacy equalisation fund to absorb variations from budget on this income stream. These funds have now been undesignated. Going forwards, this risk will be addressed within the budgeting process and reserves policy. The fund is therefore £nil at 31 March 2025 (2024 £127,014).

The Trustees' policy is to hold non-designated unrestricted reserves of 3 to 6 months budgeted expenditure, having adjusted that expenditure for restricted funds held that will contribute towards it. At 31 March 2025 the non-designated unrestricted reserves held by the charity were £480,596 (2024: £546,609) which amounts to 4.9 months such expenditure.

Going Concern

As outlined, the Trust has both the reserves and the strategic planning to be able to assure its status as a going concern. Current forecasting is that unrestricted reserves will remain at or above 3 months expenditure for the next financial year and cashflow forecasts show no liquidity concerns.

Investment Policy

The Trust holds its funds in a range of low-risk current and deposit accounts with varying notice periods and interest rates, with the aim of maximising interest whilst ensuring liquidity. Deposits of over 90 days are shown as current asset investments on the balance sheet and amount to £342,049 (2024: £209,590). Deposits over 12 months and listed investments in the investment portfolio are shown as fixed assets investments on the balance sheet and amount to £225,892 (2024: £108,933).

Structure, Governance and Management

The charity is a company limited by guarantee and a charity registered with the Charities Commission in England and Wales and the Scottish Charity Regulator. Its governing document, updated during 2021/22, is the Memorandum and Articles of Association registered with Companies House. The charity is governed by the Board of Trustees, although operational matters are delegated to the Chief Executive, Pamela Healy OBE, who has been in post throughout the year, along with Directors of Finance and Operations, Alison Orman (until January 2025) and Rachel Doran (from January 2025), Communications and Policy, Vanessa Hebditch, Fundraising, Audrey Cornelius and Service Delivery, Jonathan Worsfold.

A full Board meeting is held four times a year, attended by the Executive Team, with reports received from other managers and staff members. The Audit and Risk Committee meets before every Board meeting and at other times as matters relating to financial and risk governance arise.

Prospective trustees are selected following a full recruitment process including an application and an interview with the Nominations Committee. New trustees receive a full induction pack with information pertaining to both the charity and the role of a trustee. They also have an induction meeting with the CEO and each of the senior management team.

Risk

The Trust has a risk register which is a living document, updated regularly by the Director of Finance and Operations as new risks are recognised and mitigations required. The register is reviewed by the Audit and Risk Committee at each meeting following an update, and by the Board of Trustees at least annually. In these reviews the trustees are keen to ensure that residual risk has been reduced to a level they are content with and support the Executive Team in ensuring that this happens.

Public Benefit

The trustees confirm that they have had regard to the Charity Commission's guidance on public benefit when reviewing the Trust's aims and objectives and in planning future activities and setting the policies for the year.

Statement of trustees' responsibilities

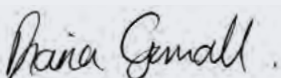
The trustees (who are also the directors of British Liver Trust for the purposes of company law) are responsible for preparing the trustees' report and the financial statements in accordance with the United Kingdom Accounting Standards (United Kingdom Generally Accepted Accounting Practice) and applicable law and regulations.

Company law requires the trustees to prepare financial statements for each financial year. Under company law the trustees must not approve the financial statements unless they are satisfied that they give a true and fair view of the state of affairs of the charitable company and of its incoming resources and application of resources, including its income and expenditure, for that period. In preparing these financial statements, the trustees are required to:

- select suitable accounting policies and apply them consistently;
- observe the methods and principles in the Charities SORP;
- make judgements and estimates that are reasonable and prudent;
- state whether applicable UK Accounting Standards have been followed, subject to any material departures disclosed and explained in the financial statements; and
- prepare the financial statements on the going concern basis unless it is inappropriate to presume that the charitable company will continue in business.

The trustees are responsible for keeping adequate accounting records that are sufficient to show and explain the charitable company's transactions and disclose with reasonable accuracy at any time the financial position of the charitable company and enable them to ensure that the financial statements comply with the Companies Act 2006. They are also responsible for safeguarding the assets of the charitable company and hence for taking reasonable steps for the prevention and detection of fraud and other irregularities.

Approved by the trustees of the charity on 22nd September 2025 and signed on its behalf by:



Diana Gornall
Acting Co-Chair of Trustees



Wim Bushell
Acting Co-Chair of Trustees

Independent Auditor's Report to the Members of British Liver Trust

Opinion

We have audited the financial statements of British Liver Trust (the 'charitable company') for the year ended 31 March 2025 which comprise the Statement of Financial Activities, the Balance Sheet, the Cash Flow Statement and notes to the financial statements, including a summary of significant accounting policies. The financial reporting framework that has been applied in their preparation is applicable law and United Kingdom Accounting Standards (United Kingdom Generally Accepted Accounting Practice).

In our opinion the financial statements:

- give a true and fair view of the state of the charitable company's affairs as at 31 March 2025 and of its incoming resources and application of resources, including its income and expenditure, for the year then ended;
- have been properly prepared in accordance with United Kingdom Generally Accepted Accounting Practice; and
- have been prepared in accordance with the requirements of the Companies Act 2006.

Basis for opinion

We conducted our audit in accordance with International Standards on Auditing (UK) (ISAs (UK)) and applicable law. Our responsibilities under those standards are further described in the Auditors' responsibilities for the audit of the financial statements section of our report. We are independent of the charitable company in accordance with the ethical requirements that are relevant to our audit of the financial statements in the UK, including the FRC's Ethical Standard, and we have fulfilled our other ethical responsibilities in accordance with these requirements. We believe that the audit evidence we have obtained is sufficient and appropriate to provide a basis for our opinion.

Conclusions relating to going concern

In auditing the financial statements, we have concluded that the trustees' use of the going concern basis of accounting in the preparation of the financial statements is appropriate.

Based on the work we have performed, we have not identified any material uncertainties relating to events or conditions that, individually or collectively, may cast significant doubt on the charitable company's ability to continue as a going concern for a period of at least twelve months from when the financial statements are authorised for issue.

Our responsibilities and the responsibilities of the trustees with respect to going concern are described in the relevant sections of this report.

Other information

The trustees are responsible for the other information. The other information comprises the information included in the Annual Report, other than the financial statements and our Report of the Independent Auditors thereon.

Our opinion on the financial statements does not cover the other information and, except to the extent otherwise explicitly stated in our report, we do not express any form of assurance conclusion thereon.

In connection with our audit of the financial statements, our responsibility is to read the other information and, in doing so, consider whether the other information is materially inconsistent with the financial statements or our knowledge obtained in the audit or otherwise appears to be materially misstated. If we identify such material inconsistencies or apparent material misstatements, we are required to determine whether this gives rise to a material misstatement in the financial statements themselves. If, based on the work we have performed, we conclude that there is a material misstatement of this other information, we are required to report that fact. We have nothing to report in this regard.

Opinions on other matters prescribed by the Companies Act 2006

In our opinion, based on the work undertaken in the course of the audit:

- the information given in the Report of the Trustees for the financial year for which the financial statements are prepared is consistent with the financial statements; and
- the Report of the Trustees has been prepared in accordance with applicable legal requirements.

Matters on which we are required to report by exception

In the light of the knowledge and understanding of the charitable company and its environment obtained in the course of the audit, we have not identified material misstatements in the Report of the Trustees.

We have nothing to report in respect of the following matters where the Companies Act 2006 requires us to report to you if, in our opinion:

- adequate accounting records have not been kept or returns adequate for our audit have not been received from branches not visited by us; or
- the financial statements are not in agreement with the accounting records and returns; or
- certain disclosures of trustees' remuneration specified by law are not made; or
- we have not received all the information and explanations we require for our audit.

Responsibilities of trustees

As explained more fully in the Statement of Trustees' Responsibilities, the trustees (who are also the directors of the charitable company for the purposes of company law) are responsible for the preparation of the financial statements and for being satisfied that they give a true and fair view, and for such internal control as the trustees determine is necessary to enable the preparation of financial statements that are free from material misstatement, whether due to fraud or error.

In preparing the financial statements, the trustees are responsible for assessing the charitable company's ability to continue as a going concern, disclosing, as applicable, matters related to going concern and using the going concern basis of accounting unless the trustees either intend to liquidate the charitable company or to cease operations, or have no realistic alternative but to do so.

Our responsibilities for the audit of the financial statements

Our objectives are to obtain reasonable assurance about whether the financial statements as a whole are free from material misstatement, whether due to fraud or error, and to issue a Report of the Independent Auditors that includes our opinion. Reasonable assurance is a high level of assurance, but is not a guarantee that an audit conducted in accordance with ISAs (UK) will always detect a material misstatement when it exists. Misstatements can arise from fraud or error and are considered material if, individually or in the aggregate, they could reasonably be expected to influence the economic decisions of users taken on the basis of these financial statements.

The extent to which our procedures are capable of detecting irregularities, including fraud is detailed below:

- We obtained an understanding of the legal and regulatory frameworks that are applicable to the company, and the industry in which it operates. These include but are not limited to compliance with the Companies Act 2006, UK Generally Accepted Accounting Principles and the relevant tax compliance regulations for the company.
- We obtained an understanding of how the company is complying with these frameworks through discussions with management.
- We enquired with management whether there were any instances of non-compliance with laws and regulations or whether they had knowledge of actual or suspected fraud. These enquiries are corroborated through follow-up audit procedures including but not limited to a review of legal and professional costs, correspondence and a review of board minutes.
- We assessed the susceptibility of the company's financial statements to material misstatement, including the risk of fraud and management override of controls. We designed our audit procedures to respond to this assessment, including the identification and testing of any related party transactions and the testing of journal transactions that arise from management estimates, that are determined to be of significant value or unusual in their nature.
- We assessed the appropriateness of the collective competence and capabilities of the engagement team, including consideration of the engagement team's knowledge and understanding of the industry in which the company operates in, and their practical experience through training and participation with audit engagements of a similar nature.

A further description of our responsibilities for the audit of the financial statements is located on the Financial Reporting Council's website at www.frc.org.uk/auditorsresponsibilities. This description forms part of our Report of the Independent Auditors.

Use of our report

This report is made solely to the charitable company's members, as a body, in accordance with Chapter 3 of Part 16 of the Companies Act 2006. Our audit work has been undertaken so that we might state to the charitable company's members those matters we are required to state to them in an auditors' report and for no other purpose. To the fullest extent permitted by law, we do not accept or assume responsibility to anyone other than the charitable company and the charitable company's members as a body, for our audit work, for this report, or for the opinions we have formed.

Michaela Johns

Michaela Johns FCCA

(Senior Statutory Auditor)

For and on behalf of Hopper Williams & Bell Limited, Statutory Auditor

Highland House, Mayflower Close, Chandler's Ford, Eastleigh, Hampshire, SO53 4AR

Date: 22nd September 2025

Statement of Financial Activities for the Year Ended 31 March 2025

(Including Income and Expenditure Account)

	Note	Unrestricted funds £	Restricted funds £	Total 2025 £	Total 2024 £
Income and Endowments from:					
Donations and legacies	2	839,950	1,509,917	2,349,867	1,729,291
Charitable activities	3	97,569	-	97,569	42,307
Investment income	4	35,907	-	35,907	21,427
Total Income		973,426	1,509,917	2,483,343	1,793,025
Expenditure on:					
Raising funds		(591,672)	-	(591,672)	(484,850)
Charitable activities	5	(583,461)	(1,319,699)	(1,903,160)	(1,388,948)
Total Expenditure		(1,175,133)	(1,319,699)	(2,494,832)	(1,873,798)
Net gains on investments	12	2,779	-	2,779	-
Net income / (expenditure)		(198,928)	190,218	(8,710)	(80,773)
Transfers between funds	21	5,901	(5,901)	-	-
Net movement in funds		(193,027)	184,317	(8,710)	(80,773)
Reconciliation of funds					
Total funds brought forward		673,623	238,402	912,025	992,798
Total funds carried forward	21	480,596	422,719	903,315	912,025

All of the charity's activities derive from continuing operations during the above two periods.

The funds breakdown for 2025 is shown in note 21.

Balance Sheet as at 31 March 2025

Company registration number: 02227706

	Note	2025 £	2024 £
Fixed assets			
Tangible assets	11	50,801	56,671
Fixed asset investments	12	225,892	108,933
		<u>276,693</u>	<u>165,604</u>
Current assets			
Stocks	13	-	6,086
Debtors falling due within one year	14	179,424	275,532
Debtors falling due after more than one year	14	-	8,829
Current asset Investments	15	342,049	209,590
Cash at bank and in hand		361,481	422,352
		<u>882,954</u>	<u>922,389</u>
Creditors: Amounts falling due within one year	16	<u>(256,332)</u>	<u>(175,968)</u>
Net current assets		<u>626,622</u>	<u>746,421</u>
Net assets		<u>903,315</u>	<u>912,025</u>
Funds of the Charity:			
Restricted funds		422,719	238,402
Unrestricted income funds			
Board designated funds		-	127,014
Unrestricted funds		480,596	546,609
Total funds	21	<u>903,315</u>	<u>912,025</u>

The financial statements have been prepared in accordance with the provisions applicable to companies subject to the small companies regime.

The financial statements on pages 36 to 55 were approved by the trustees, and authorised for issue on 22nd September 2025 and signed on their behalf by:



Graham Warner
Trustee

Statement of Cash Flows for the Year Ended 31 March 2025

	Note	2025 £	2024 £
Cash flows from operating activities			
Net cash (expenditure)/income		(8,710)	(80,773)
Adjustments to cash flows from non-cash items			
Depreciation & loss on disposal of assets	7	23,951	23,726
Gain on investments	12	(3,572)	-
Investment income	4	(35,907)	(21,427)
		<u>(24,238)</u>	<u>(78,474)</u>
Working capital adjustments			
(Increase)/Decrease in stocks	13	6,086	1,909
(Increase)/Decrease in debtors	14	104,937	(92,099)
Increase/(Decrease) in creditors and deferred income	16	80,364	6,439
Net cash flows from operating activities		<u>167,149</u>	<u>(162,225)</u>
Cash flows from investing activities			
Interest receivable and similar income	4	35,907	21,427
Purchase of tangible fixed assets	11	(18,081)	(1,856)
Acquisition of fixed asset investments	12	(222,320)	-
Net cash inflows /(outflows) from investing activities		<u>(204,494)</u>	<u>19,571</u>
Net decrease in cash and cash equivalents		(37,345)	(142,654)
Cash and cash equivalents at 1 April		740,875	883,529
Cash and cash equivalents at 31 March	23	<u>703,530</u>	<u>740,875</u>

All of the cash flows are derived from continuing operations during the above two periods.

Notes to the Financial Statements for the Year Ended 31 March 2025

1. Accounting policies

Summary of significant accounting policies and key accounting estimates

The principal accounting policies applied in the preparation of these financial statements are set out below. These policies have been consistently applied to all the years presented, unless otherwise stated.

Statement of compliance

British Liver Trust is a registered charity, registration number 298858 (E&W), SC042140 (Scotland), company number 2227706, registered in the United Kingdom. The address of the charity is given in the reference and administrative details on page 1 of these financial statements. The nature of the charity's operations and principal activities are described in the Trustees' annual report.

The financial statements have been prepared in accordance with Accounting and Reporting by Charities: Statement of Recommended Practice applicable to charities preparing their accounts in accordance with the Financial Reporting Standard applicable in the UK and Republic of Ireland (FRS 102) effective 1 January 2019, the Financial Reporting Standard applicable in the United Kingdom and Republic of Ireland (FRS 102), the Charities and Trustee Investment (Scotland) Act 2005, the Charities Accounts (Scotland) Regulations 2006 (as amended) the Charities Act 2011 and UK Generally Accepted Practice as it applies from 1 January 2015.

Basis of preparation

The charity constitutes a public benefit entity as defined by FRS 102.

The financial statements are prepared on a going concern basis under the historical cost convention, modified to include certain items at fair value. The financial statements are prepared in sterling which is the functional currency of the charity and rounded to the nearest £.

Going concern

The financial statements have been prepared on a going concern basis. The trustees have considered the level of funds held and the expected level of income and expenditure for 12 months from authorising these financial statements and it is clear that the charity is able to continue as a going concern.

Income and endowments

Voluntary income including donations, gifts, legacies and grants that provide core funding, or are of a general nature, is recognised when the Charity has entitlement to the income, it is probable that the income will be received and the amount can be measured with sufficient reliability.

Grants

Grants relating to revenue are recognised in income over the period in which the related costs are recognised.

Donations and legacies

Donations are recognised on a receivable basis when receipt is probable, and the amount can be reliably measured. For legacies, entitlement is taken as the earlier of the date on which either: the charity is aware that probate has been granted, the estate has been finalised and notification has been made by the executor to the charity that a distribution will be made, or when a distribution is received from the estate. Receipt of a legacy, in whole or in part, is only considered probable when the amount can be measured reliably. Where legacies have been notified to the charity, or the charity is aware of the granting of probate, and the criteria for income recognition have not been met, then the legacy is treated as a contingent asset and disclosed if material.

Investment income

Investment income is recognised on a receivable basis.

Charitable activities

Income from charitable activities includes income recognised as earned (as the related goods or services are provided) under contract.

Expenditure

All expenditure is recognised once there is a legal or constructive obligation to that expenditure, it is probable settlement is required, and the amount can be measured reliably. All costs are allocated to the applicable expenditure heading that aggregate similar costs to that category. Where costs cannot be directly attributed to particular headings, they have been allocated on a basis consistent with the use of resources.

Raising funds

These are costs incurred in attracting voluntary income.

Charitable activities

Charitable expenditure comprises those costs incurred by the charity in the delivery of its activities and services for its beneficiaries. It includes both costs that can be allocated directly to such activities and those costs of an indirect nature necessary to support them.

Support costs

Support costs are apportioned by activity on the basis of direct staff costs incurred for each activity.

Governance costs

These include the costs attributable to the Charity's compliance with constitutional and statutory requirements, including audit, strategic management and Trustees' meetings and reimbursed expenses.

VAT

Irrecoverable VAT is charged against the category of resources expended for which it was incurred.

Expenditure is posted net of VAT, and any irrecoverable VAT is posted to the expenditure on which it was incurred on a quarterly basis.

Taxation

The charity is considered to pass the tests set out in Paragraph 1 Schedule 6 of the Finance Act 2010 and therefore it meets the definition of a charitable company for UK corporation tax purposes. Accordingly, the charity is potentially exempt from taxation in respect of income or capital gains received within categories covered by Chapter 3 Part 11 of the Corporation Tax Act 2010 or Section 256 of the Taxation of Chargeable Gains Act 1992, to the extent that such income or gains are applied exclusively to charitable purposes.

Tangible fixed assets

Individual fixed assets costing £250 or more are initially recorded at cost, less any subsequent accumulated depreciation and subsequent accumulated impairment losses.

Depreciation is provided on tangible fixed assets for the entire year, regardless of when an asset is purchased, so as to write off the cost or valuation, less any estimated residual value, over their expected useful economic life as follows:

Asset class	Depreciation method and rate
Furniture and Equipment	20% straight line basis
Software	33% straight line basis

Fixed asset investments

Investments are held in a discretionary portfolio managed by Brewin Dolphin. Investments are stated at market value at the balance sheet date. All investments are unrestricted. Investments comprise cash deposits held for investment purposes in deposit accounts with access greater than 90 days. There is a planned programme to draw on these deposits to fund our growth.

Investments are included at their market value at the balance sheet date. Realised and unrealised gains and losses are recognised in the Statement of Financial Activities. Investment income is recognised when receivable.

Stock

Stock is valued at the lower of cost and estimated selling price less costs to complete and sell, after due regard for obsolete and slow moving stocks. Cost is determined using the first-in, first-out (FIFO) method. Items donated for resale or distribution are not included in the financial statements until they are sold or distributed.

Trade debtors

Trade debtors are amounts due from customers for merchandise sold or services performed in the ordinary course of business.

Trade debtors are recognised initially at the transaction price. They are subsequently measured at amortised cost using the effective interest method, less provision for impairment. A provision for the impairment of trade debtors is established when there is objective evidence that the charity will not be able to collect all amounts due according to the original terms of the receivables.

Cash and cash equivalents

Cash and cash equivalents comprise cash on hand and call deposits, and other short-term highly liquid investments that are readily convertible to a known amount of cash and are subject to an insignificant risk of change in value.

Investments

Investments comprise cash deposits held for investment purposes in deposit accounts with access greater than 90 days. There is a planned programme to draw on these deposits to fund our growth.

Trade creditors

Trade creditors are obligations to pay for goods or services that have been acquired in the ordinary course of business from suppliers. Accounts payable are classified as current liabilities if the Charity does not have an unconditional right, at the end of the reporting period, to defer settlement of the creditor for at least twelve months after the reporting date. If there is an unconditional right to defer settlement for at least twelve months after the reporting date, they are presented as non-current liabilities.

Fund structure

Unrestricted income funds are general funds that are available for use at the trustees' discretion in furtherance of the objectives of the Charity.

In accordance with their reserves policy, trustees take a risk based approach to reserves management and designate funds from the unrestricted funds to meet defined strategic objectives.

Restricted income funds are those donated for use in a particular area or for specific purposes, the use of which is restricted to that area or purpose.

Leases

Leases in which substantially all the risks and rewards of ownership are retained by the lessor are classified as operating leases. Rentals payable under operating leases are charged in the Statement of Financial Activities on a straight line basis over the lease term.

Pensions and other post retirement obligations

The charity operates a defined contribution pension scheme. Contributions are charged in the statement of financial activities as they become payable in accordance with the rules of the scheme.

Accounting estimates

Estimates and judgements are continually evaluated and are based on historical experience and other factors, that are believed to be reasonable under the circumstances and there is sufficient information provided to prepare a reasonable estimate. The critical accounting estimate and area of judgement made within these accounts relates to legacies.

Legacy income is accrued when the conditions of entitlement, certainty and measurement are all present. Entitlement is achieved when confirmation is received from the Executor that probate has been granted and that the British Liver Trust has been named as the beneficiary. Certainty is met when the executor confirms that probate is sufficient to cover the bequest and that there are no challenges to the will or any other circumstances where the resultant bequest could be significantly diminished. Measurement is achieved through either having a clear statement from the Executor of the value of the bequest or being able to reasonably estimate this from the will and probate.

2. Income from donations and legacies

	Unrestricted funds £	Restricted funds £	Total 2025 £	Total 2024 £
Donations and legacies:				
Legacies	105,563	-	105,563	173,220
Net assets from Children's Liver Disease Foundation	-	488,097	488,097	-
Other grants & donations	734,387	1,021,820	1,756,207	1,556,071
	<u>839,950</u>	<u>1,509,917</u>	<u>2,349,867</u>	<u>1,729,291</u>

£625,105 of the income in the prior year was attributable to restricted funds and £1,104,186 was attributable to unrestricted funds.

On 1 April 2024, the charity merged with the Children's Liver Disease Foundation (CLDF). The £488,097 restricted donation disclosed above represents the net assets of CLDF at that date, transferred to the charity.

3. Income from charitable activities

	Unrestricted funds £	Restricted funds £	Total 2025 £	Total 2024 £
Sale of publications	3,400	-	3,400	9,203
Income from Unit Hire	65,823	-	65,823	-
Health events, PPI etc	28,346	-	28,346	33,104
	<u>97,569</u>	<u>-</u>	<u>97,569</u>	<u>42,307</u>

All of the income in the prior year was attributable to unrestricted funds.

4. Investment income

	Unrestricted funds £	Restricted funds £	Total 2025 £	Total 2024 £
Interest receivable on bank deposits	26,236	-	26,236	21,427
Income receivable from investments	9,671	-	9,671	-
	<u>35,907</u>	<u>-</u>	<u>35,907</u>	<u>21,427</u>

All the income in the prior year was attributable to unrestricted funds.

5. Expenditure

	Direct costs £	Staff costs £	Support costs £	Total 2025 £
Charitable activities:				
Awareness & comms	209,136	212,927	71,374	493,437
Children & YP support	8,149	312,181	104,645	424,975
Helpline	6,629	198,861	66,659	272,149
Patient information	40,863	94,949	31,827	167,639
Peer support & outreach	21,412	219,296	73,510	314,218
Policy	13,697	162,556	54,489	230,742
	299,886	1,200,770	402,504	1,903,160
Fundraising	65,571	394,023	132,078	591,672
	365,457	1,594,793	534,582	2,494,832

	Direct costs £	Staff costs £	Support costs £	Total 2024 £
Charitable activities:				
Awareness & comms	167,814	229,141	90,743	487,698
Children & YP support	-	-	-	-
Helpline	6,417	169,013	66,931	242,361
Patient information	23,909	97,861	38,754	160,524
Peer support & outreach	9,956	184,825	73,193	267,974
Policy	11,908	156,504	61,978	230,390
	220,004	837,344	331,599	1,388,947
Fundraising	46,031	314,338	124,482	484,851
	266,035	1,151,682	456,081	1,873,798

£580,021 (2024 - £1,001,186) of the above expenditure on charitable activities was attributable to unrestricted funds and £1,319,699 (2024 - £512,242) to restricted funds. All expenditure on raising funds for both years was unrestricted.

6. Analysis of support and governance costs

	Total 2025 £	Total 2024 £
Support costs:		
Staff cost	283,973	201,134
Rent	33,965	45,794
Depreciation	23,224	23,726
Information and communication technology	77,589	58,157
Office costs	42,536	52,602
Insurance	14,659	8,386
Employee health and life insurance	10,455	8,327
Travel and subsistence	13,063	9,318
Governance costs	35,118	48,637
	534,582	456,081
Governance costs:		
Audit	15,885	13,700
Auditor other	5,774	4,430
Companies House	34	13
Trustee recruitment	350	350
Legal and professional	15	16,642
Other	13,060	13,502
	35,118	48,637

The legal and professional fees were incurred as a result of the merger with the Children's Liver Disease Foundation.

7. Net outgoing resources

Net incoming/outgoing resources for the year include:

	2025 £	2024 £
Audit fees	15,885	13,700
Other non-audit services	5,774	4,430
Depreciation	23,224	23,726
Loss on disposal of fixed assets	727	-
	727	-

8. Trustees' remuneration and expenses

No trustees, nor any persons connected with them, have received any remuneration from the charity during the year.

The amount of expenses received by the trustees during the year totalled £Nil (2024 - Nil).

9. Staff costs

The aggregate payroll costs were as follows:

	2025 £	2024 £
Staff costs during the year were:		
Wages and salaries	1,592,253	1,151,128
Social security costs	142,635	105,676
Pension costs	143,878	96,692
	1,878,766	1,353,496

The monthly average number of persons (including senior management team) employed by the charity during the year was as follows:

	2025 No	2024 No
Charitable activities	48	37

Two employees received emoluments of more than £60,000 during the year.

The number of employees whose emoluments fell within the following bands was:

	2025 No	2024 No
£60,001 - £70,000	-	1
£70,001 - £80,000	1	-
£80,001 - £90,000	-	1
£90,001 - £100,000	1	-

The total employee benefits of the key management personnel of the charity were £435,375 (2024 - £337,689).

The chief executive officer, as the highest paid member of staff, received employee benefits, including pension, totalling £107,187 (2024 - £98,175).

During the year, the charity made no ex-gratia payment. In 2024 there was one which was in relation to a settlement agreement amounting to £5,400.

10. Taxation

The charity is a registered charity and is therefore exempt from taxation.

11. Tangible fixed assets

	Furniture and equipment £	Software £	Total £
Cost			
At 1 April 2024	120,809	1,122	121,931
Additions	18,081	-	18,081
Disposals	(11,906)	(1,122)	(13,028)
At 31 March 2025	126,984	-	126,984
Depreciation			
At 1 April 2024	64,138	1,122	65,260
Charge for the year	23,224	-	23,224
Eliminated on disposals	(11,179)	(1,122)	(12,301)
At 31 March 2025	76,183	-	76,183
Net book value			
At 31 March 2025	50,801	-	50,801
At 31 March 2024	56,671	-	56,671

12. Fixed asset investments

	2025 £	2024 £
Deposit accounts	-	108,933
Listed investments	225,892	-
	225,892	108,933
	2025 £	2024 £
Listed investments:		
Market value at 1 April 2024	-	-
Investments transferred on merger	223,459	-
Additions	12,320	-
Disposals	(13,459)	-
Net gain on revaluation	3,572	-
Market value at 31 March 2025	225,892	-
Historical cost as at 31 March 2025	236,465	-

	2025 £	2024 £
Analysis of investments:		
UK Bonds	30,686	-
Overseas Bonds	69,158	-
UK Equities	11,113	-
North American Equities	24,560	-
European Equities	5,581	-
Japanese Equities	1,077	-
Developed Asia	5,559	-
Absolute Return	25,396	-
Property	6,933	-
Commodities	15,209	-
Other investments	19,188	-
Cash products	11,432	-
	225,892	-

13. Stock

	2025 £	2024 £
Stocks	-	6,086
	-	6,086

14. Debtors

Amounts due within one year

	2025 £	2024 £
Trade debtors	3,370	58,403
Prepayments	88,439	66,696
Accrued income	87,615	131,825
VAT	-	10,810
Other debtors	-	7,798
	179,424	275,532

Amounts due after more than one year

	2025 £	2024 £
Other debtors	-	8,829
	-	8,829

15. Current asset investments

	2025 £	2024 £
Deposit accounts	342,049	209,590

16. Creditors: amounts falling due within one year

	2025 £	2024 £
Research grants (note 18)	30,424	-
Trade creditors	90,125	92,745
Taxation and social security	35,297	26,328
Other creditors	253	1,702
Pension scheme creditor	19,140	14,134
Accruals	77,845	41,059
VAT	3,248	-
	256,332	175,968

17. Pension and other schemes**Defined contribution pension scheme**

The Charity operates a defined contribution pension scheme. The pension cost charge for the year represents contributions payable by the Charity to the scheme and amounted to £143,878 (2024 - £96,692).

Contributions totalling £19,140 (2024 - £14,134) were payable to the scheme at the end of the year and are included in creditors.

18. Research grants

The following research projects have previously been granted funds by Children's Liver Disease Foundation, which from 1 April 2024 became part of British Liver Trust. The following amounts represent the balance of accrued funding remaining unspent at the year end.

	2025 £	2024 £
2016 CDLF grant – Professor David Wraith, University of Birmingham: Development of biomarkers and novel therapeutics in autoimmune hepatitis type 2	30,424	-

19. Charity status

The charity is limited by guarantee, incorporated in England & Wales, and consequently does not have share capital. Each of the trustees is liable to contribute an amount not exceeding £1 towards the assets of the charity in the event of liquidation.

20. Commitments

Operating Lease Commitments

The total amount recognised as an expense for operating leases during the year was £36,268 (2024: £43,201). The total amount contracted for but not provided in the financial statements was £29,288 (2024 – £64,963).

21. Funds

	Balance at April 2024 £	Incoming resources and gains £	Resources expended and losses £	Transfers £	Balance at 31 March 2025 £
Unrestricted funds					
<i>General</i>					
Unrestricted income fund	546,609	976,205	(1,175,133)	132,915	480,596
<i>Designated</i>					
Legacy equalisation fund	127,014	-	-	(127,014)	-
Total unrestricted funds	673,623	976,205	(1,175,133)	5,901	480,596
Restricted funds					
Adult or general services:					
PSC / Cholangiocarcinoma re- search	21,564	-	(3,172)	-	18,392
Love your Liver roadshows	111,627	120,786	(180,938)	-	51,475
Love your Liver Stoke	50,000	-	(10,000)	-	40,000
Helpline	-	53,000	(53,000)	-	-
MacMillan nurse	-	43,172	(43,172)	-	-
Liver transplant support groups	2,199	-	(2,199)	-	-
Patient Information	-	30,000	(30,000)	-	-
Wales Cross-party Working Group	2,282	-	(2,282)	-	-
England projects	-	116,887	(116,887)	-	-
Scotland projects	13,500	43,955	(57,455)	-	-
Wales projects	4,646	-	(4,646)	-	-
Policy role	-	40,000	(40,000)	-	-
UKLA	11,333	26,500	(24,645)	-	13,188
Patient survey	7,464	3,000	(10,464)	-	-
LCUK	-	66,124	(55,693)	-	10,431
LYL Unit	13,787	-	(4,953)	(5,901)	2,933
Hep B	-	24,224	(24,224)	-	-
	238,402	567,648	(663,730)	(5,901)	136,419

21. Funds *(continued)*

	Balance at April 2024 £	Incoming resources and gains £	Resources expended and losses £	Transfers £	Balance at 31 March 2025 £
Restricted funds					
Specific funds for children's services:					
Family and young people events	-	1,000	(1,000)	-	-
Christopher RJ Tromans Fund	-	2,300	(2,200)	-	100
BBC CiN 21-24	-	19,372	(19,372)	-	-
Awards for All – England	-	19,825	(11,418)	-	8,407
Awards for All – Scotland children	-	21,588	(13,172)	-	8,416
Biliary Atresia Research – Frances Wilson-Barnes	-	5,451	-	-	5,451
Yellow alert	-	8,066	(8,066)	-	-
CLDF provision of information and support services	-	33,390	(33,390)	-	-
Children's general services	-	831,277	(567,351)	-	263,926
	-	(942,269)	655,969	-	286,300
Total restricted funds	238,402	1,509,917	(1,319,699)	(5,901)	422,719
Total funds	912,025	2,486,122	(2,494,832)	-	903,315

21. Funds (continued)

	Balance at April 2023 £	Incoming resources £	Resources expended £	Transfers £	Balance at 31 March 2024 £
Unrestricted funds					
<i>General</i>					
Unrestricted income fund	497,376	1,167,920	(1,361,556)	242,869	546,609
<i>Designated</i>					
Growth investment fund	314,065	-	-	(314,065)	-
Legacy equalisation fund	53,794	-	-	73,220	127,014
Total unrestricted funds	865,235	1,167,920	(1,361,556)	2,024	673,623
Restricted funds					
General research	286	-	(286)	-	-
PSC / Cholangiocarcinoma research	21,564	-	-	-	21,564
Love your Liver roadshows	9,897	203,994	(102,264)	-	111,627
Love your Liver Stoke	-	50,000	-	-	50,000
Helpline	-	83,750	(83,750)	-	-
National Lottery England	-	39,277	(39,277)	-	-
Liver transplant support groups	-	5,000	(2,801)	-	2,199
Patient Information	1,582	36,200	(37,782)	-	-
International NASH day	-	9,800	(9,800)	-	-
Wales cross-party working gp	4,341	-	(2,059)	-	2,282
Scotland projects	71,505	29,500	(87,505)	-	13,500
Wales projects	10,055	10,000	(15,409)	-	4,646
Policy role	-	27,000	(27,000)	-	-
Foundation for Liver Research	-	35,000	(35,000)	-	-
UKLA	8,333	23,000	(20,000)	-	11,333
Patient survey	-	11,343	(3,879)	-	7,464
LCUK	-	45,430	(45,430)	-	-
LYL Unit	-	15,811	-	(2,024)	13,787
Total restricted funds	127,563	625,105	(512,242)	(2,024)	238,402
Total funds	992,798	1,793,025	(1,873,798)	-	912,025

Designated funds:

Growth Investment Fund – The charity had a 3 year strategy for growth, as required to deliver its mission statement and meet growing need. A strategy for investment in fundraising was developed, to grow income to a sustainable level beyond the 3 year strategy, but this investment, and the use of reserves to grow service delivery in the meantime produced a deficit budget. The Trustees agreed that reserves that were planned to be utilised through deficit would be set aside funds for this purpose. In the year to March 2025 this amounts to £Nil (2024 – £Nil). The trustees have agreed that there will be an intention to have balanced budgets from 2025/26 onwards.

Legacy Equalisation Fund – The charity recognises that budgeting for legacy income is a risk, due to the unpredictability of this income stream and in prior years the Trustees established a legacy equalisation fund to absorb variations from budget on this income stream. These funds have now been undesignated. Going forwards, this risk will be addressed within the budgeting process and reserves policy and not by an equalisation fund.

Restricted funds:

The specific purposes for which the funds are to be applied are as follows:

General research – Money held from former donations for general research projects. The Trust has utilised these funds towards its patient involvement in research and development projects with pharmaceutical and other organisations.

PSC / Cholangiocarcinoma research – This represents donations for research into a Quality of Life tool for people living with PSC in partnership with University College London. The use of the remaining funds is in discussion.

Love Your Liver Roadshows – Funds are raised both nationally and regionally, normally from charitable trusts. Regionally raised funds are generally for specific roadshows and allocated towards the roadshows in that area. The roadshows raise awareness of liver disease and its prevention, as well as promoting early detection and community diagnosis. The funds held at 31 March are therefore for specific upcoming roadshows.

Love your Liver Stoke – These funds were donated by Dr Alison Brind to pay for the Love Your Liver Roadshow to visit the Stoke area, where she practised, during the years 2024 to 2028.

National Lottery England – This funding was the initial tranche of a grant to part fund our outreach and peer support work in England over a 3 year period.

Liver transplant support groups – This funding was a grant from Payce-Chiesi Copadi Ltd for peer support groups for those going through liver transplant.

Patient Information – This represents funding for the production and dissemination of information on liver health and liver conditions.

Wales Cross-party Working Group – This funding was provided to facilitate the functioning of a cross-party working group in Wales. The funding was received before the year end to 31 March 2021, but the formation of the group was delayed by COVID-19, so the group was formed in the year to 31 March 2022 with regular ongoing meetings.

Adult Outreach England – Donations have been received, largely from charitable trusts, for the promotion and development of support groups for liver patients and relatives/carers in England, together with raising awareness of liver health and promoting early detection. The outreach work is supported by the National Lottery Community Fund.

Adult Outreach Scotland – Donations have been received, largely from charitable trusts, for the promotion and development of support groups for liver patients and relatives/carers in Scotland, together with raising awareness of liver health and promoting early detection. The outreach work is supported by the National Lottery Community Fund.

Adult Outreach Wales – Funding has previously been provided by the Welsh government for the promotion and development of support groups for liver patients and relatives/carers in Wales, together with raising awareness of liver health and promoting early detection. Further funding has been received from charitable trusts and will be utilised towards the same aims.

UK Liver Alliance – We received funding from British Association for the Study of the Liver and British Society for Gastroenterology to chair and act as the secretariat for the UK Liver Alliance, bringing together all the voices of the liver community.

Patient Survey – This funding was provided to undertake a survey of patients living with liver disease and was in progress before and after the year end.

Macmillan Nurse – the charity received grant payments to fund a Nurse role focused on Cancer support. This role was employed June 2024 to January 2025, and monthly grant payments were claimed in arrears in support of the employment costs of this role.

Children's General Services – These funds include the general reserves of the Children's Liver Disease Foundation (CLDF) which joined with the British Liver Trust as at 1 April 2024. Donations received in year collected through CLDF branded campaigns, donation platforms or web pages are treated as restricted for the purpose of supporting Children's General Services. These funds are to be used specifically for Children in accordance with CLDF's charitable objectives prior to its closure.

CLDF specific restricted funds:

Awards for All – England & Scotland – funding was received from the National Lottery to fund support services for Children living with liver disease and their families.

Children in Need – funded a Children & Family Officer post. This role worked directly with patients and families, providing emotional and practical support.

CLDF Provision of Information and Support Services, Patient Advocacy and facilitating patient engagement – During 2021 an application was made to companies for funding to support the costs of the provision of the information and support services. These funds were spent in full by year end.

22. Analysis of net assets between funds

	Unrestricted funds £	Restricted funds £	Total funds at 31 March 2025 £
Tangible fixed assets	50,801	-	50,801
Fixed asset investments	-	225,892	225,892
Current assets	686,127	196,827	882,954
Current liabilities	(256,332)	-	(256,332)
Total net assets	480,596	422,719	903,315

23. Analysis of net funds

	At 1 April 2024 £	Cash flow £	At 31 March 2025 £
Fixed asset investments	108,933	(108,933)	-
Current asset investments	209,590	132,459	342,049
Cash at bank and in hand	422,352	(60,871)	361,481
Total	740,875	(37,345)	703,530

24. Related party transactions

During the year the Charity made the following related party transactions:

Wim Bushell

Wim Bushell is a Trustee and was Deputy Chair of Arthur J Gallagher in the prior year, who act as insurance brokers for the Trust. Transactions of £11,386 during the prior year with Arthur J Gallagher were in the normal course of business. The balance that was outstanding due to Arthur J Gallagher, for invoices in relation to the prior period, which have also been prepaid, amounted to £13,297. Wim Bushell no longer holds the post, no transactions are disclosed for 2025.

“I must praise the telephone helpline with the nurses and how they react to you as an individual and the advice and guidance they give. If I had some of this information in the early stages I probably would not be where I am today. I’ve used the telephone service on several occasions...their empathy and knowledge are outstanding.”

“The British Liver Trust has really stepped up to play a vital role in supporting people living with hepatitis B and in raising awareness of the condition and fighting stigma. As a consultant who sees the real-life impact of hepatitis B, I welcome their ambitious plans to expand their work in this area so they can reach more people, provide more information and support, and amplify the voice of those affected to policy makers.”

“Thank you for being a support for my daughter. It’s at her age that it’s nice for her to find support away from us and have others to talk to – especially those who understand how hard it can be for them in the same situation. She really has bonded with you.”



The British Liver Trust is the largest UK liver charity for adults and leads the fight against liver disease and liver cancer.

Our work is only possible thanks to voluntary grants and donations. Thank you to all those who support our work and enable us to deliver our services.